

*Wired/Wireless IP Camera*

# Quick Installation Guide

(IE Browser)



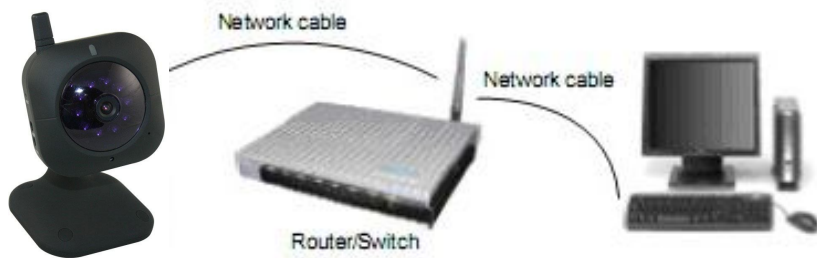
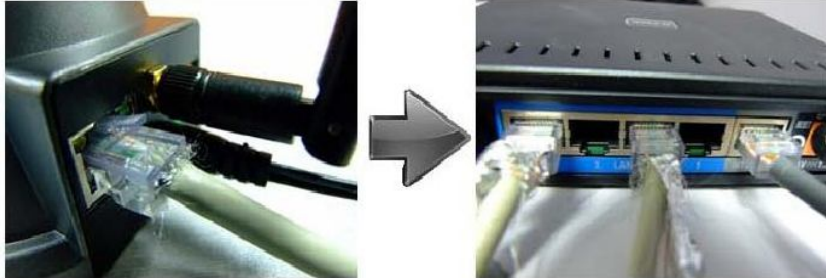
***Black***



***White***

## Step 1: Hardware Installation.

1. Install the Wi-Fi antenna.
2. Plug the power adaptor into camera.
3. Plug the network cable into camera, the other side to the router/switch.



## Step 2: Software Installation.



Install the follow software:

1. **IP Camera Tool**: Open the CD, click "**IPCamSetup.exe**"—"Next"—"Next"—"Close".
2. **ActiveX**: Click "**Appinstall.exe**"—"Next"—"Install"—"Finish".



After this done, the icon "IP Camera Tool" will be displayed on desktop.

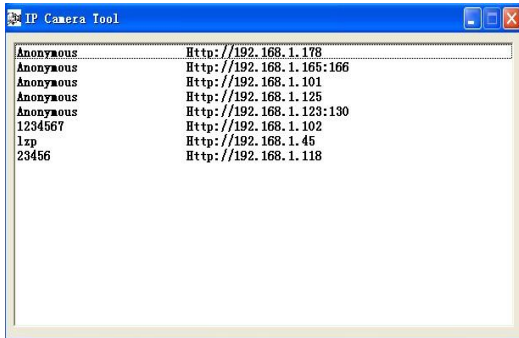
## Step 3: Real-time Video Demonstration.

### 1. Login:

Double click “IP Camera Tool” icon on desktop, search the IP address, choose the one of your camera, double click to go to IE login interface.

**Default username: admin**

**Password: no password.**



### 2. Choose the language.

English, Chinese, Spanish, Korean, German, French, Italian, Portuguese optional.



### 3. Choose the work mode.

**IE browser:** choose ActiveX mode.

**Safari, Firefox, Google chrome browser:** Server push mode.

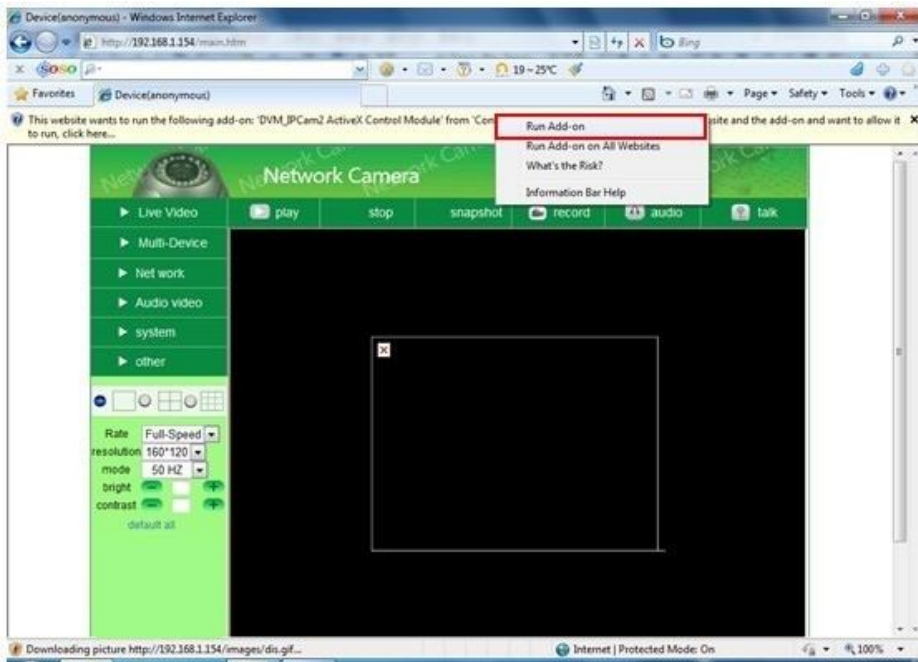
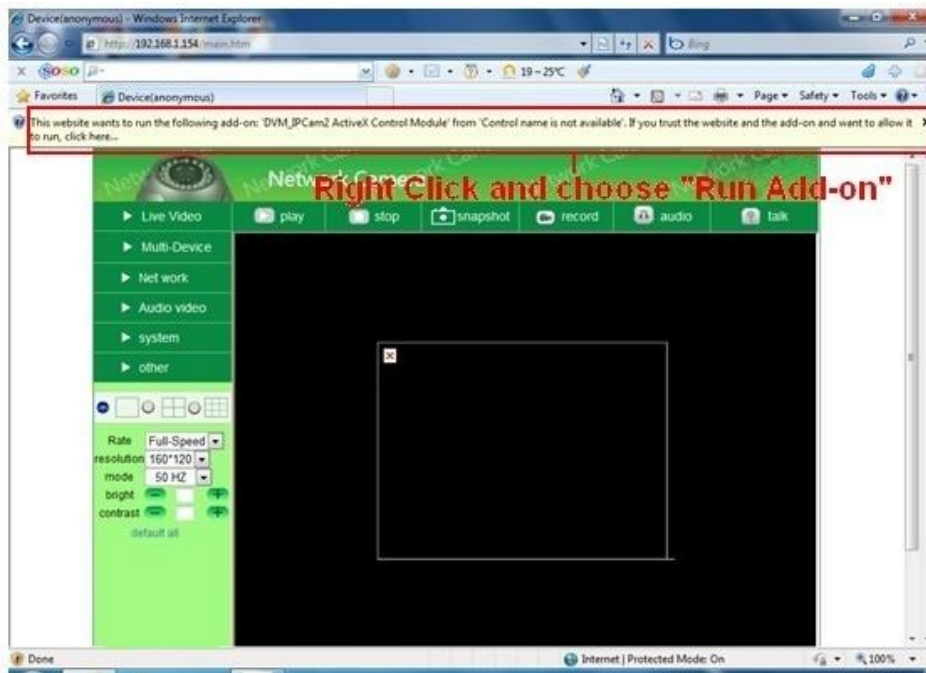
**Mobile phone:** sign in mobile phone mode.

### 4. Sign in.

Click Sign In, then can get video on real-time.

### Q1: No pictures problem with ActiveX Settings for IE Browser

If use IE browser to connect the camera for the 1<sup>st</sup> time, maybe there is no image displayed, there will be an ActiveX prompt, please click the prompt and choose **Run Add-on**, refresh the IE interface, and login the camera again, then will see live video.



If there is still no live video after run ActiveX, please try to enable the ActiveX options of IE security settings, please do the follow steps:

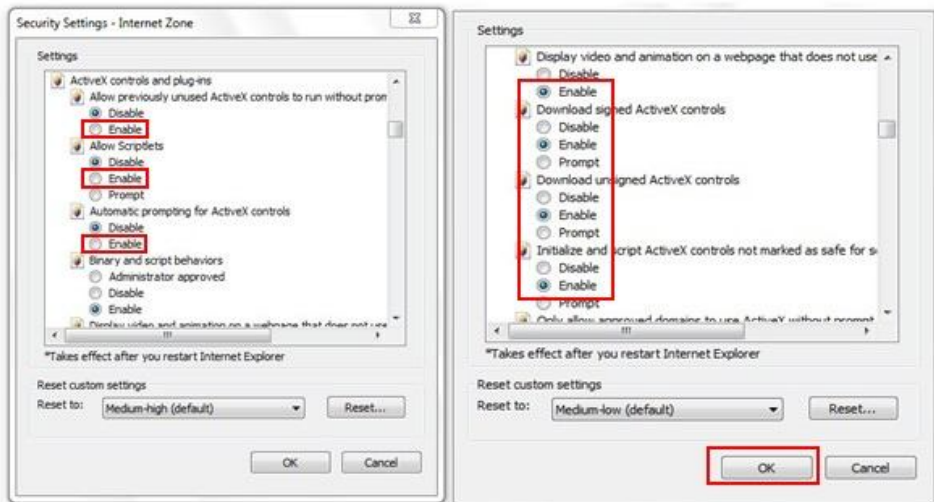
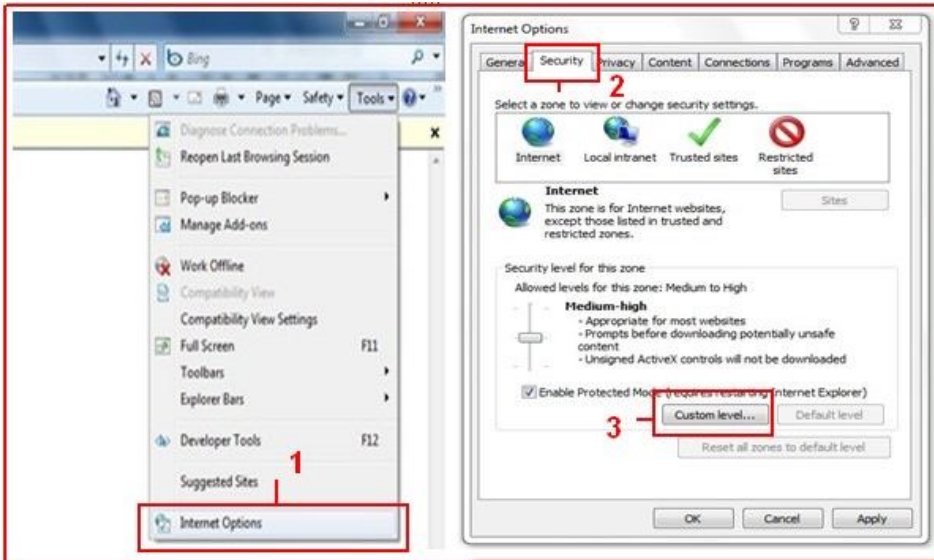
## More Security, More Convenience

1. Close the firewall of your computer.
2. Change the ActiveX settings, “IE” browser > “Tool” > “Internet Options” > “Security” > “Custom Level” > “ActiveX control and Plug-ins”, all the ActiveX options set to be “Enable”: Especially:

**Enable: Download unsigned ActiveX controls**

**Enable: Initialize and script ActiveX controls not marked as safe**

**Enable: Run ActiveX controls and plu-ins**



In **Additional**: you can also click “start” menu->“Internet Explorer”, choose “Internet attributes “ to enter, or via “Control Panel” ->“Internet Explorer”, enter to Security setting.

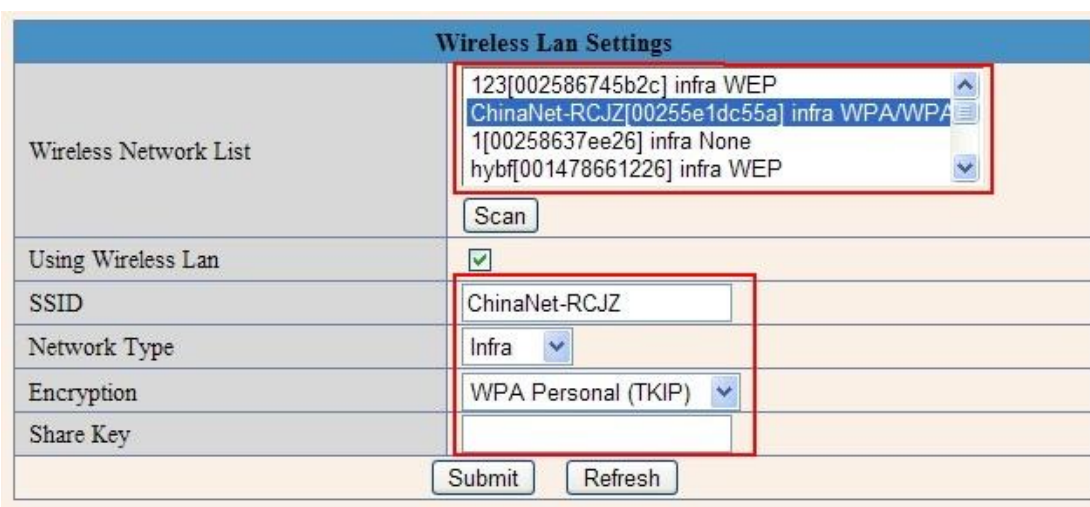
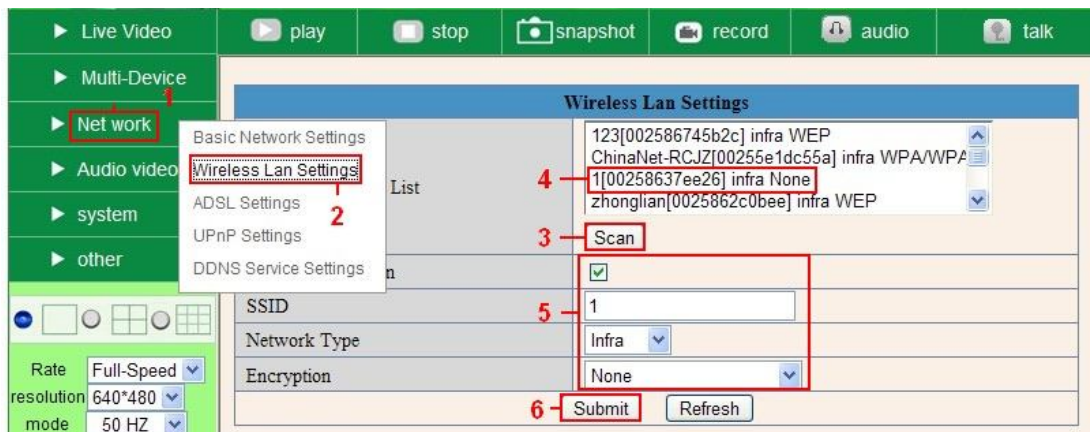
3. If there is still no image, please close your anti-virus software, and then try step 1 & 2 again.

## Q2: How to do Wireless Settings

1. Make sure the router is a wireless router.
2. Make sure the Wi-Fi antenna installed.
3. Make sure whether there is encryption of the WLAN of router, if there is encryption, keep the key.
4. Login the camera, click “**Network**”>“**Wireless Lan Settings**”>“**Scan**”, please scan 2 times, then you will find the WLAN from the list, choose the one you use.

## More Security, More Convenience

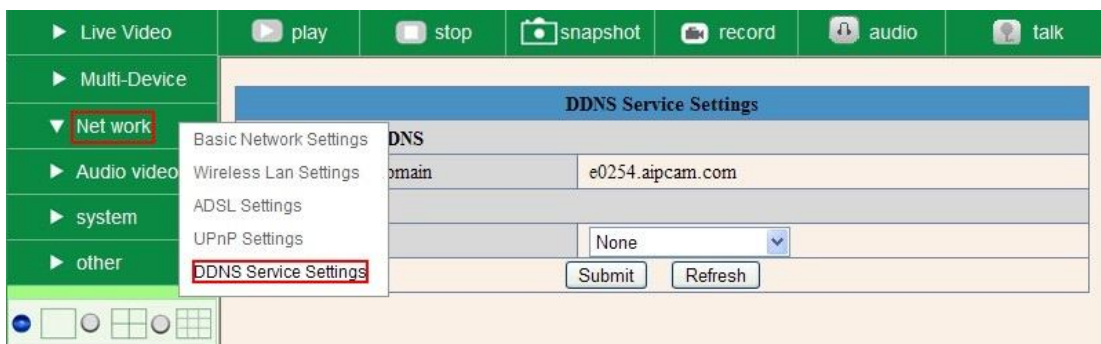
5. If there is no encryption, just click **“Submit”**, if there is encryption, please input the key, then click **“Submit”**.
6. Wait about 30 seconds, the camera will reboot, then unplug the network cable.



### Q3: How to use DDNS

1. Login the camera:

Click **“Network”>“DDNS Service Settings”**.



2. Choose the DDNS, there are 2 options:

## More Security, More Convenience

**Manufacturer's DDNS:** This domain is provided by manufacturer.

**Third Party DDNS:** This domain is provided by the 3<sup>rd</sup> party, such as DynDNS, Oray, 3322 etc.

DDNS Service Settings	
<b>Manufacturer's DDNS</b>	
Manufacturer's Domain	e0254.aipcam.com
<b>Third Party DDNS</b>	
DDNS Service	None

None

Oray.net

DynDns.org(dyndns)

DynDns.org(statdns)

DynDns.org(custom)

3322.org(dyndns)

3322.org(statdns)

### Third Party DDNS

If you use third party DDNS, please choose the server you use, such as "3322.org" or "dyndns.org" as below:

DDNS Service Settings	
<b>Manufacturer's DDNS</b>	
Manufacturer's Domain	e0254.aipcam.com
<b>Third Party DDNS</b>	
DDNS Service	DynDns.org(dyndns)
DDNS User	ipcamdemo
DDNS Password	••••••
DDNS Host	ipcamdemo.dyndns.org
DDNS or Proxy Server	
DDNS or Proxy Port	
Re-Update Ignoring All Errors	<input type="checkbox"/> never do this unless your hostname has been unblocked
proxy config is needed if the device is in China Mainland or HongKong	
<div>Submit Refresh</div>	

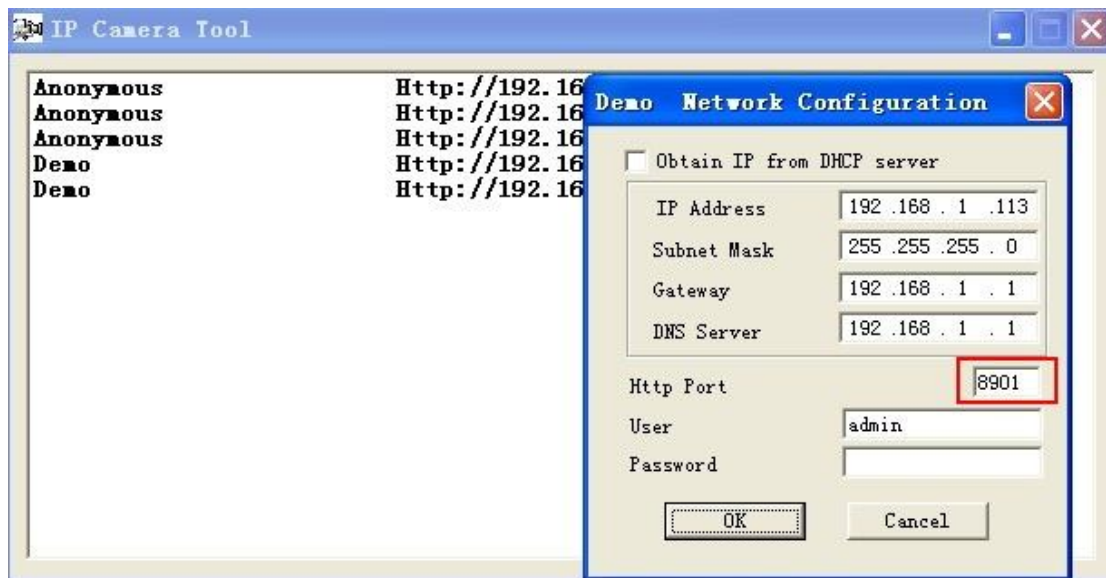
DDNS Service Settings	
<b>Manufacturer's DDNS</b>	
Manufacturer's Domain	e0254.aipcam.com
<b>Third Party DDNS</b>	
DDNS Service	3322.org(dyndns)
DDNS User	ipcamdemo
DDNS Password	••••••
DDNS Host	ipcamdemo.3322.org
<div>Submit Refresh</div>	

You have to register an account firstly, keep the user, password, host, then fill in it.

**Note:** Only one DDNS can be chosen, for example, if you use manufacturer's DDNS, the 3<sup>rd</sup> one won't work, if use the 3<sup>rd</sup> DDNS, the manufacturer's one won't work.

### 3. Change the camera's port.

The default port of camera is "80", please change "80" to any other one you like, such as "81", "100", "8091" etc. Click "OK", the camera will reboot, wait about 30 seconds.



Make sure the "Subnet Mask", "Gateway", "DNS Server" is the same as your router.

### 4. Set Port Forwarding in the router.

This is the most important step. Set port forwarding in router refer to the IP of your camera correctly, then the DDNS will work. Because there are so many kinds of routers from all over the world, so it's difficult to show a fix steps, but there are some samples of different routers' port forwarding settings as below, just for reference:

#### TP-LINK:

(1) Login the router.



(2) Choose "Forwarding", select "Virtual Servers"

(3) Click the Add New button, pop-up below:

## Add or Modify a Virtual Server Entry

Service Port:  (XX-XX or XX)

IP Address:

Protocol:

Status:

Common Service Port:

Save

Return

Fill the service port (**except 80**), IP address of the camera, then click Save  
The port and IP address should be the same as Camera.

## BELKIN:

- (1) Login the router.
  - (2) Choose “**Firewall**”, select “**Virtual Servers**”
  - (3) Input the port (**except 80**) and IP address, then click save.
- Note: The port and IP address should be the same as Camera.

**BELKIN**
Router Setup

Home | Help | Logout | Internal

**LAN Setup**  
LAN Settings  
DHCP Client List  
Static Routing  
**Internet WAN**  
Connection Type  
DNS  
MAC Address Cloning  
**Wireless**  
Channel and SSID  
Security  
Wi-Fi Protected Setup  
Guest Access  
Use as Access Point  
**QoS**  
QoS Profiles  
Traffic Statistics  
**Firewall**  
Virtual Servers  
MAC Address Filtering  
Access Control  
DMZ  
DDNS  
WAN Ping Blocking  
Security Log  
**Utilities**  
Restart Router  
Restore Factory Defaults  
Save/Backup Settings  
Restore Previous Settings  
Firmware Update  
System Settings

**Firewall > Virtual Servers**  
This function will allow you to route external (Internet) calls for services such as a web server (port 80), FTP server (Port 21), or other applications through your Router to your internal network. [More Info](#)  
Add    
Clear entry  

	Enable	Description	Inbound port	Type	Private IP address	Private port
1	<input checked="" type="checkbox"/>	IPCAM	101	BOTH	192.168.2.56	101
2	<input type="checkbox"/>			BOTH	192.168.2.	
3	<input type="checkbox"/>			BOTH	192.168.2.	
4	<input type="checkbox"/>			BOTH	192.168.2.	
5	<input type="checkbox"/>			BOTH	192.168.2.	
6	<input type="checkbox"/>			BOTH	192.168.2.	
7	<input type="checkbox"/>			BOTH	192.168.2.	
8	<input type="checkbox"/>			BOTH	192.168.2.	
9	<input type="checkbox"/>			BOTH	192.168.2.	
10	<input type="checkbox"/>			BOTH	192.168.2.	

## DLINK:

- (1) Login the router.
  - (2) Choose “**Advanced**”, select “**Virtual Servers**”
  - (3) Input the port, IP address, Protocol, then click save.
- Note: The “**public port**” & “**private port**” should be the same as camera’s port, choose the protocol to be “**both**”.

## More Security, More Convenience

D-Link

DIR-601
SETUP
ADVANCED
TOOLS
STATUS
SUPPORT

VIRTUAL SERVER  
 PORT FORWARDING  
 APPLICATION RULES  
 QOS ENGINE  
 NETWORK FILTER  
 ACCESS CONTROL  
 WEBSITE FILTER  
 INBOUND FILTER  
 FIREWALL SETTINGS  
 ROUTING  
 ADVANCED WIRELESS  
 ADVANCED NETWORK  
 IPV6

VIRTUAL SERVER

The Virtual Server option allows you to define a single public port on your router for redirection to an internal LAN IP Address and Private LAN port if required. This feature is useful for hosting online services such as FTP or Web Servers.

Save Settings
Don't Save Settings

24 — VIRTUAL SERVERS LIST

Name	Port	Traffic Type	Schedule
<div style="display: flex; justify-content: space-between;"> <span>rivomaxcam</span> <span>&lt;&lt; HTTP</span> </div>	<div style="display: flex; justify-content: space-between;"> <span>Public Port</span> <span>81</span> </div>	<div style="display: flex; justify-content: space-between;"> <span>Protocol</span> <span>Both</span> </div>	<div style="display: flex; justify-content: space-between;"> <span>Schedule</span> <span>Always</span> </div>
<div style="display: flex; justify-content: space-between;"> <span><input type="checkbox"/></span> <span>IP Address</span> </div> <div style="display: flex; justify-content: space-between;"> <span>192.168.0.107</span> <span>&lt;&lt; Computer Name</span> </div>	<div style="display: flex; justify-content: space-between;"> <span>Private Port</span> <span>81</span> </div>	<div style="display: flex; justify-content: space-between;"> <span>256</span> <span>Inbound Filter</span> </div>	<div style="display: flex; justify-content: space-between;"> <span>Allow All</span> <span>&lt;&lt;</span> </div>
<div style="display: flex; justify-content: space-between;"> <span>Name</span> <span>&lt;&lt; Application Name</span> </div>	<div style="display: flex; justify-content: space-between;"> <span>Public Port</span> <span>0</span> </div>	<div style="display: flex; justify-content: space-between;"> <span>Protocol</span> <span>TCP</span> </div>	<div style="display: flex; justify-content: space-between;"> <span>Schedule</span> <span>Always</span> </div>
<div style="display: flex; justify-content: space-between;"> <span><input type="checkbox"/></span> <span>IP Address</span> </div> <div style="display: flex; justify-content: space-between;"> <span>0.0.0.0</span> <span>&lt;&lt; Computer Name</span> </div>	<div style="display: flex; justify-content: space-between;"> <span>Private Port</span> <span>0</span> </div>	<div style="display: flex; justify-content: space-between;"> <span>6</span> <span>Inbound Filter</span> </div>	<div style="display: flex; justify-content: space-between;"> <span>Allow All</span> <span>&lt;&lt;</span> </div>
<div style="display: flex; justify-content: space-between;"> <span>Name</span> <span>&lt;&lt; Application Name</span> </div>	<div style="display: flex; justify-content: space-between;"> <span>Public Port</span> <span>0</span> </div>	<div style="display: flex; justify-content: space-between;"> <span>Protocol</span> <span>TCP</span> </div>	<div style="display: flex; justify-content: space-between;"> <span>Schedule</span> <span>Always</span> </div>
<div style="display: flex; justify-content: space-between;"> <span><input type="checkbox"/></span> <span>IP Address</span> </div>	<div style="display: flex; justify-content: space-between;"> <span>Private Port</span> </div>	<div style="display: flex; justify-content: space-between;"> <span>Inbound Filter</span> </div>	

**Helpful Hints...**  
  
 Check the **Application Name** drop down menu for a list of predefined server types. If you select one of the predefined server types, click the arrow button next to the drop down menu to fill out the corresponding field.  
  
 You can select a computer from the list of DHCP clients in the **Computer Name** drop down menu, or you can manually enter the IP address of the LAN computer to which you would like to open the specified port.  
  
 Select a schedule for when the virtual server will be enabled. If you do not see the schedule you need in

After all these 4 steps done, then you can use the DDNS freely, check the DDNS status from the camera as below, and get the link of DDNS for internet view.

Step: "Login">"System">"Device Info":

▶ Live Video   ▶ play   ▶ stop   ▶ snapshot   ▶ record   ▶ audio   ▶ talk

▶ Multi-Device   ▶ Net work   ▶ Audio video   ▼ system   ▶ other

Device Status

Device ID	000000256796
Device Firmware Version	17.22.2.26
Device Embeded Web UI Version	20.8.1.37
Alias	Test
Alarm Status	None
DDNS Status	3322 Succeed http://jerryjwb.3322.org:128
UPnP Status	UPnP Succeed

Refresh

▶ Live Video   ▶ play   ▶ stop   ▶ snapshot   ▶ record   ▶ audio   ▶ talk

▶ Multi-Device   ▶ Net work   ▶ Audio video   ▼ system   ▶ other

Device Status

Device ID	000DCSD008FA
Device Firmware Version	17.22.2.26
Device Embeded Web UI Version	20.8.4.23
Alias	Demo
Alarm Status	None
DDNS Status	aipcam.com Succeed http://e0254.aipcam.com:8901
UPnP Status	UPnP Succeed

Refresh

### Q4: How to know the WAN IP of the device.

1. From internet.

If you want to know the WAN IP of your device, please go to

<http://www.whatismyip.com>. You will find the current WAN IP of your device.



2. From router.

You can also get the WAN IP address from your router.

## Q5: How to register a third party DDNS account

For example, you can go to DynDNS website to register a free account.

<http://www.dyndns.org> / <http://www.dyndns.com>.

1. Click **Sign up FREE**.



2. Choose **Sign Up** under **FREE**.

## More Security, More Convenience

Most Popular		
<b>DynDNS Free</b>	<b>DynDNS Pro</b>	<b>DynDNS Custom</b>
<b>FREE</b>	<b>\$15<sub>/yr</sub></b>	<b>\$29<sup>.95</sup><sub>/yr</sub></b>
Get a free domain name	Up to 30 Pro domain names	DNS hosting for yourdomain.com
Update monthly to avoid expiration	Never expires, just works	Branded URL-shortening with WebHop
Use with Windows, OSX, routers & more	...also works with TSIG clients	..also works with Apple AirPort & Bonjour
Free email and community support	Access to phone technical support	Access to phone technical support
<b>Sign Up</b>	<b>Sign Up</b>	<b>Sign Up</b>

3. Do the follow steps:

**My Account**  
**My Services**  
Dynamic DNS Pro  
Internet Guide  
SLA  
Premier Support  
  
Zone Level Services  
Domain registration and transfer, DNS hosting, MailHop services  
  
Host Services  
Dynamic DNS hosts, WebHop URL Forwarding  
  
Dynect SMB  
MailHop Outbound  
SSL Certificates  
  
Renew Services  
Auto Renew Settings  
Sync Expirations  
  
**Account Settings**  
**Billing**

**Add New Hostname** [↑ Host Services](#)  
  
You don't currently have a [Dynamic DNS Pro service](#) in your account.  
  
To get the full benefits of Dynamic DNS, including premium subscriber domains and other features, [add Dynamic DNS Pro to your shopping cart](#) (or try it with \$1.99 [monthly subscription](#)).  
  
**Fill in a name you want** **Choose dyndns.org here**  
**Hostname:**    
**Wildcard:** ☐ create "\*\*.host.dyndns-yourdomain.com" alias (for example to use same settings for www.host.dyndns-yourdomain.com)  
**Service Type:** ☒ Host with IP address  
☐ WebHop Redirect (URL forwarding service)  
☐ Offline Hostname  
  
**IP Address:**  **Click here to get the IP address**  
[Your current location's IP address is 183.16.183.45](#)  
TTL value is 60 seconds. [Edit TTL...](#)

**My Cart** [0 items](#)  
  
**WE'RE HIRING**  
  
Powered by **Dyn**  
  
**Mail Routing:** ☐ I have mail server with another name and would like to add MX hostname...  
  
**What do you want to use this host for?**  
Select services and devices you would like to use with this hostname.  
**Work From Home Office or VPN:**  
      
      
**Hosting and Design For Web Sites and Blogs:**  
       
**Remote Access For Devices:**  
       
     
  
**Add To Cart**

Then choose **Add to Cart**.

4. Set the username and password as below:

Create account or log in to continue:

The screenshot shows a web form for creating a new account. It includes fields for Username, Password, Confirm password, Email, and Confirm email. There are also checkboxes for subscribing to a newsletter and for removing HTML formatting. A security image with numbers is shown, and a checkbox for agreeing to the terms of service is present. A 'Create Account' button is at the bottom. Red numbers 1 through 4 are used as annotations: 1 points to the subscription checkboxes, 2 points to the security image, 3 points to the terms of service checkbox, and 4 points to the 'Create Account' button.

Username:

Password:

Confirm password:

Email:

Confirm email:

Subscribe to: ☒ DynDNS.com newsletter  
(1 or 2 per month)  
☐ Dyn Inc. press releases  
☐ Remove HTML formatting from email

Security Image:

Enter the numbers from the above image:

☒ I agree with the [acceptable use policy \(AUP\)](#) and [privacy policy](#).

Create Account

After these settings have been done, it will send an email to your mailbox to active this account.

5. Please login your email box, and open the active link you get by email, then it will go to the activate page to get this account active.

You will get all the details of your DDNS, such as hostname, WAN IP address etc.

Thanks for your support and attention, for further operation details, please check the full version user manual of our IP Cameras!