

*Wired/Wireless IP Camera*

# Quick Installation Guide

(IE Browser)

*Model: APM-J602-WS-IR*



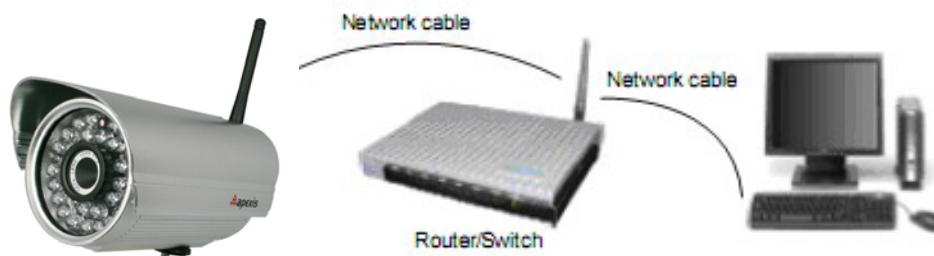
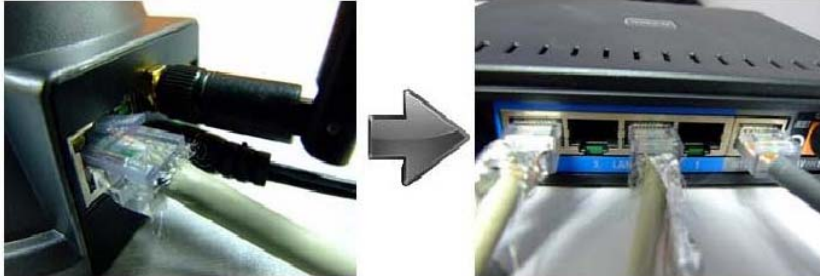
*Silver*



*Purple*

## Step 1: Hardware Installation.

1. Install the Wi-Fi antenna.
2. Plug the power adaptor into camera.
3. Plug the network cable into camera, the other side to the router/switch.




## Step 2: Software Installation.



Install the follow software:

1. **IP Camera Tool:** Open the CD, click "IPCamSetup.exe"—"Next"—"Next"—"Close".
2. **ActiveX:** Click "Appinstall.exe"—"Next"—"Install"—"Finish".



After this done, the icon "IP Camera Tool"  will be displayed on desktop.

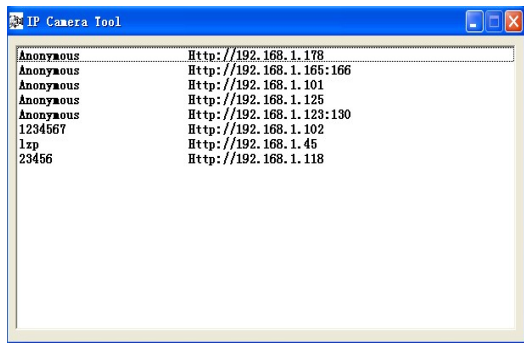
## Step 3: Real-time Video Demonstration.

### 1. Login:

Double click "IP Camera Tool" icon on desktop, search the IP address, choose the one of your camera, double click to go to IE login interface.

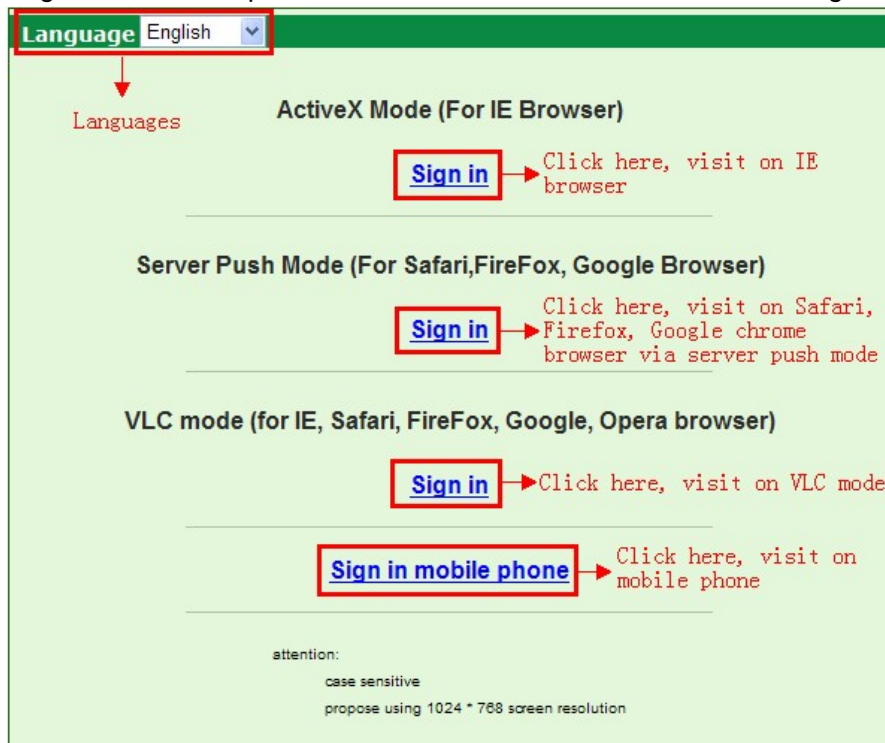
**Default username: admin**

**Password: no password.**



### 2. Choose the language.

English, Chinese, Spanish, Korean, German, French, Italian, Portuguese optional.



### 3. Choose the work mode.

**IE browser:** choose ActiveX mode.

**Safari, Firefox, Google chrome browser:** Server push mode/ VLC mode..

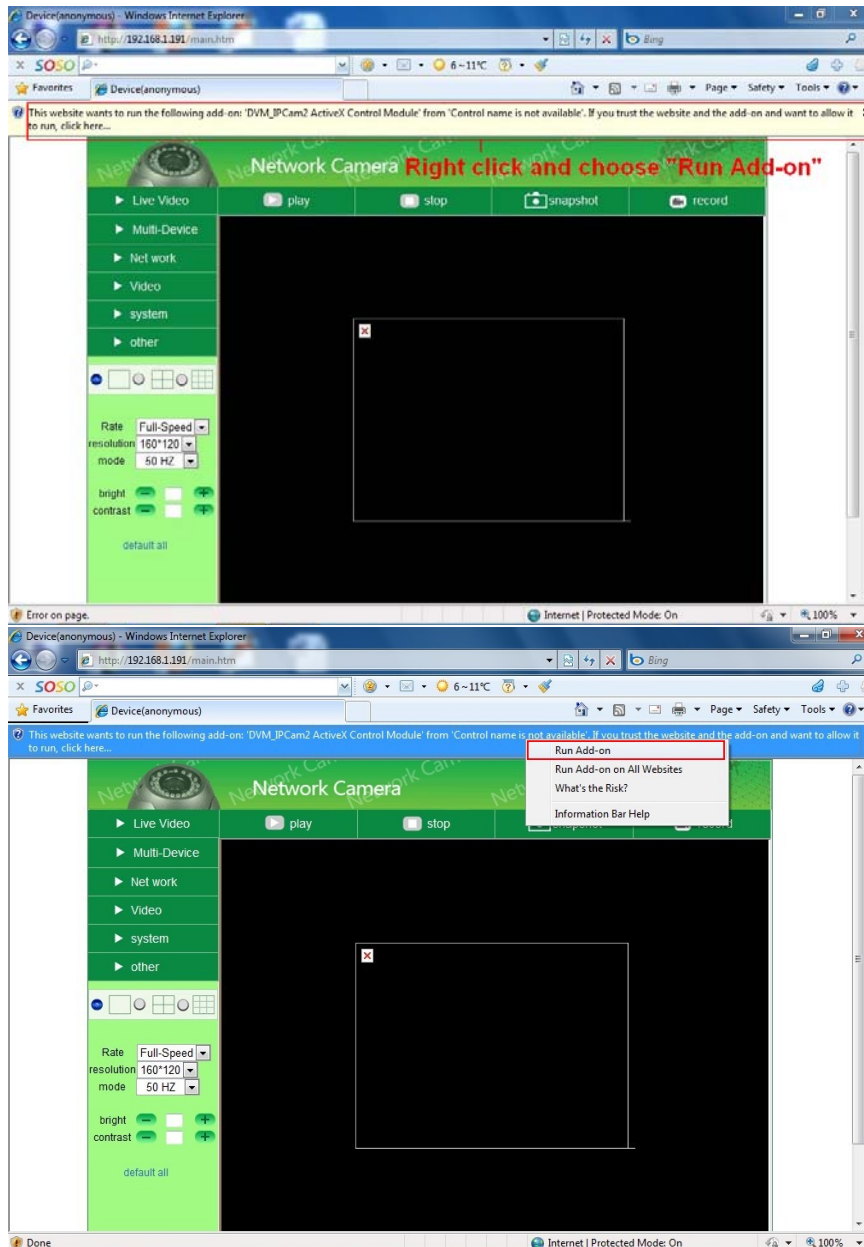
**Mobile phone:** sign in mobile phone mode.

#### 4. Sign in.

Click Sign In, then can get video on real-time.

### Q1: No pictures problem with ActiveX Settings for IE Browser

If use IE browser to connect the camera for the 1<sup>st</sup> time, maybe there is no image displayed, there will be an ActiveX prompt, please click the prompt and choose **Run Add-on**, refresh the IE interface, and login the camera again, then will see live video.



If there is still no live video after run ActiveX, please try to enable the ActiveX options of IE security settings, please do the follow steps:

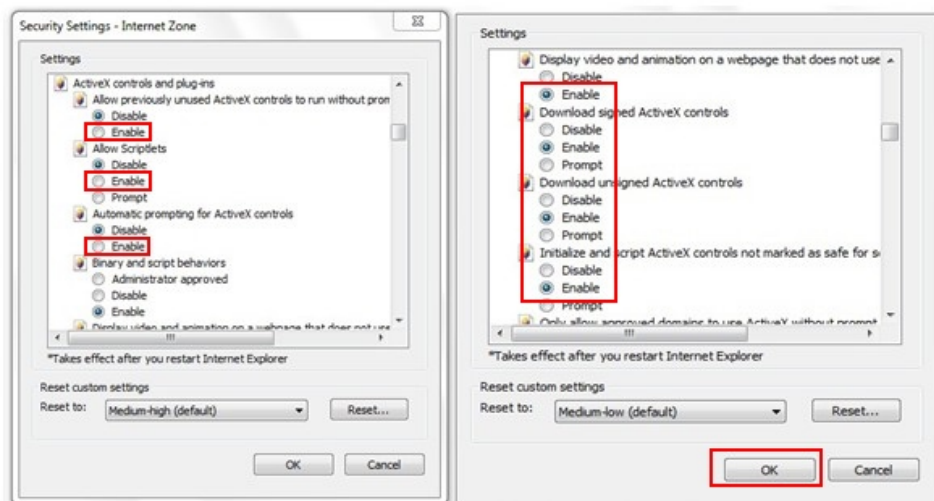
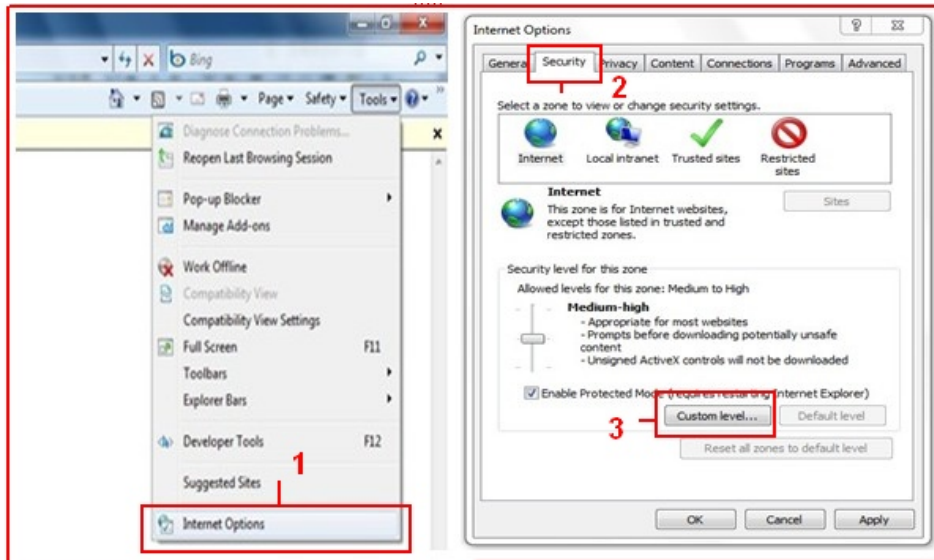
1. Close the firewall of your computer.
2. Change the ActiveX settings, "IE" browser > "Tool" > "Internet Options" >

“Security”> “Custom Level” > “ActiveX control and Plug-ins”, all the ActiveX options set to be “Enable”: Especially:

**Enable: Download unsigned ActiveX controls**

**Enable: Initialize and script ActiveX controls not marked as safe**

**Enable: Run ActiveX controls and plu-ins**



In

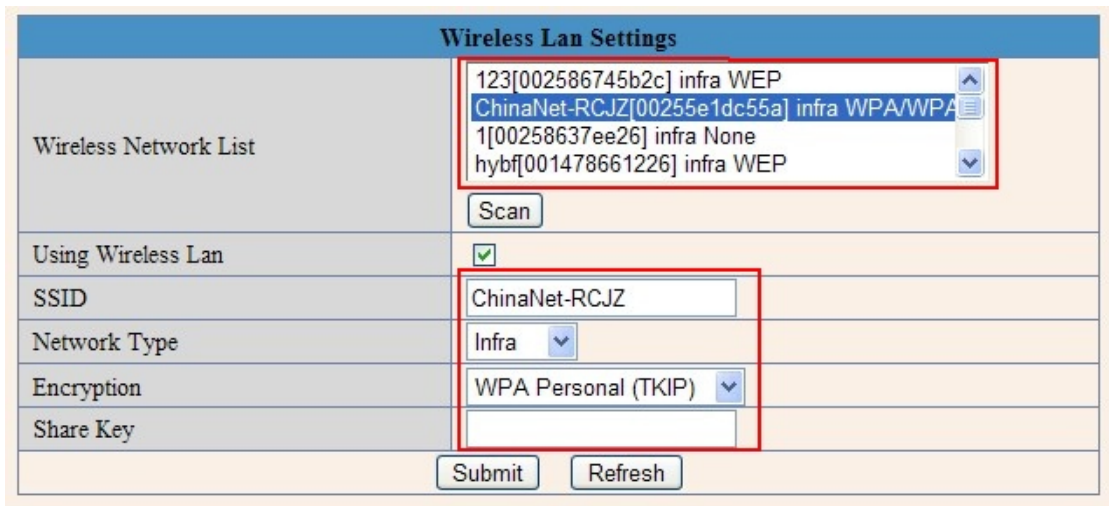
**Addition:** you can also click “start” menu->“Internet Explorer”, choose “Internet attributes “ to enter, or via “Control Panel” ->“Internet Explorer”, enter to Security setting.

3. If there is still no image, please close your anti-virus software, and then try step 1 & 2 again.

## Q2: How to do Wireless Settings

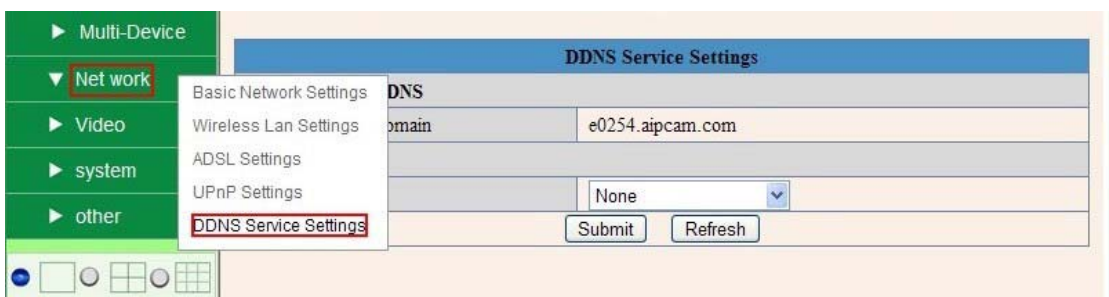
1. Make sure the router is a wireless router.
2. Make sure the Wi-Fi antenna installed.
3. Make sure whether there is encryption of the WLAN of router, if there is encryption, keep the key.
4. Login the camera, click “Network”>“Wireless Lan Settings”>“Scan”, please scan

- 2 times, then you will find the WLAN from the list, choose the one you use.
5. If there is no encryption, just click “**Submit**”, if there is encryption, please input the key, then click “**Submit**”.
6. Wait about 30 seconds, the camera will reboot, then unplug the network cable.



### Q3: How to use DDNS

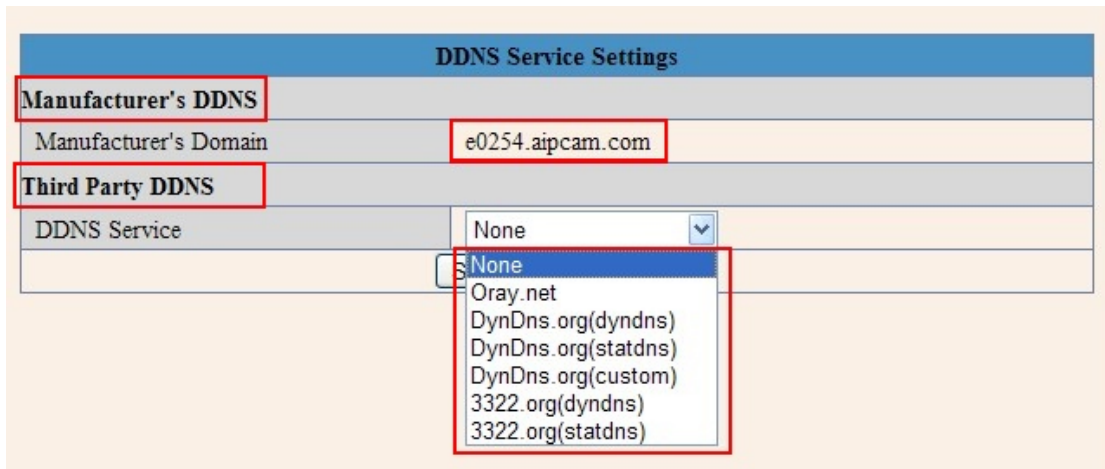
1. **Login the camera:**  
Click “**Network**”>“**DDNS Service Settings**”.



2. Choose the DDNS, there are 2 options:

**Manufacturer's DDNS:** This domain is provided by manufacturer.

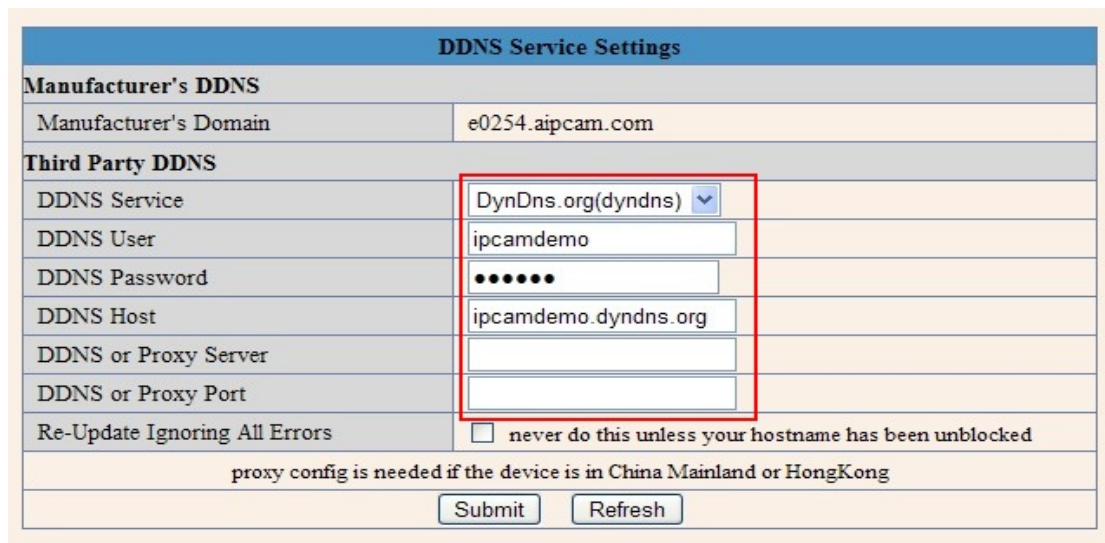
**Third Party DDNS:** This domain is provided by the 3<sup>rd</sup> party, such as DynDNS, Oray, 3322 etc.



| DDNS Service Settings      |                  |
|----------------------------|------------------|
| <b>Manufacturer's DDNS</b> |                  |
| Manufacturer's Domain      | e0254.aipcam.com |
| <b>Third Party DDNS</b>    |                  |
| DDNS Service               | None             |

### Third Party DDNS

If you use third party DDNS, please choose the server you use, such as "3322.org" or "dyndns.org" as below:



| DDNS Service Settings  |  |
|--|--|
| <b>Manufacturer's DDNS</b>   |  |
| Manufacturer's Domain  | e0254.aipcam.com   |
| <b>Third Party DDNS</b>  |  |
| DDNS Service   | DynDns.org(dyndns)   |
| DDNS User  | ipcamdemo  |
| DDNS Password  | ••••••   |
| DDNS Host  | ipcamdemo.dyndns.org   |
| DDNS or Proxy Server   |  |
| DDNS or Proxy Port   |  |
| Re-Update Ignoring All Errors  | <input type="checkbox"/> never do this unless your hostname has been unblocked |
| proxy config is needed if the device is in China Mainland or HongKong        |  |
| <input type="button" value="Submit"/> <input type="button" value="Refresh"/> |  |

| DDNS Service Settings  |                    |
|--|--------------------|
| <b>Manufacturer's DDNS</b>   |                    |
| Manufacturer's Domain  | e0254.aipcam.com   |
| <b>Third Party DDNS</b>  |                    |
| DDNS Service   | 3322.org(dyndns) ▼ |
| DDNS User  | ipcamdemo          |
| DDNS Password  | ••••••             |
| DDNS Host  | ipcamdemo.3322.org |
| <input type="button" value="Submit"/> <input type="button" value="Refresh"/> |                    |

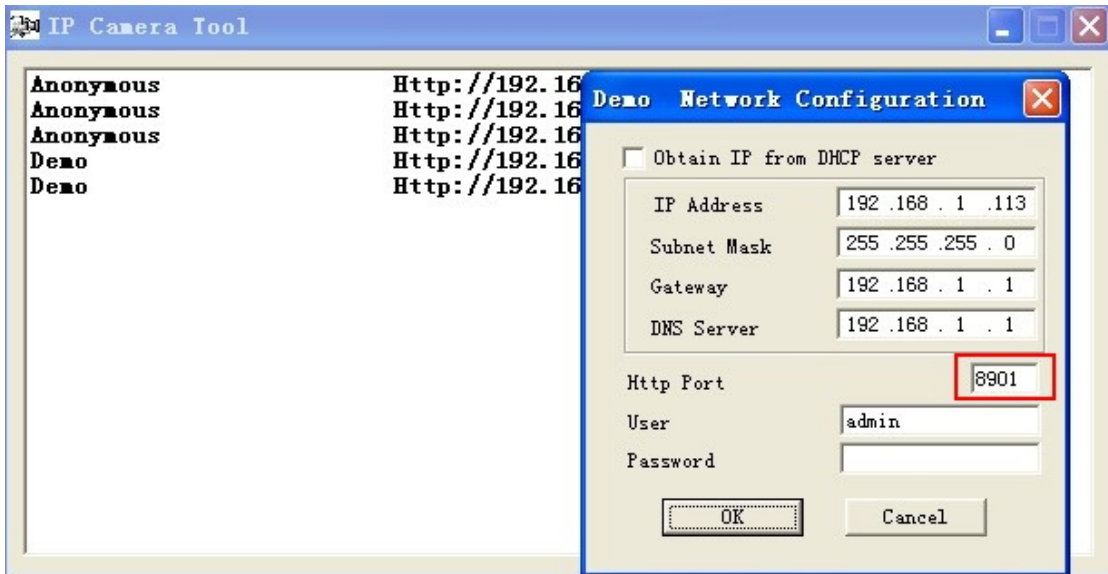
You have to register an account firstly, keep the user, password, host, then fill in it.

**Note:** Only one DDNS can be chosen, for example, if you use manufacturer's DDNS, the 3<sup>rd</sup> one won't work, if use the 3<sup>rd</sup> DDNS, the manufacturer's one won't work.

### 3. Change the camera's port.

The default port of camera is "80", please change "80" to any other one you like, such as "81", "100", "8091" etc.

Click "OK", the camera will reboot, wait about 30 seconds.



Make sure the "Subnet Mask", "Gateway", "DNS Server" is the same as your router.

### 4. Set Port Forwarding in the router.

This is the most important step. Set port forwarding in router refer to the IP of your camera correctly, then the DDNS will work. Because there are so many kinds of routers from all over the world, so it's difficult to show a fix steps, but there are some samples of different routers' port forwarding settings as below, just for reference:



## TP-LINK:

(1) Login the router.



(2) Choose “Forwarding”, select “Virtual Servers”

(3) Click the Add New button, pop-up below:

### Add or Modify a Virtual Server Entry

Service Port:  (00X-XX or XX)

IP Address:

Protocol: ALL

Status: Enabled

Common Service Port: -Select One-

Save Return

Fill the service port (**except 80**), IP address of the camera, then click Save  
The port and IP address should be the same as Camera.

## BELKIN:

(1) Login the router.

(2) Choose “Firewall”, select “Virtual Servers”

(3) Input the port (**except 80**) and IP address, then click save.

Note: The port and IP address should be the same as Camera.

**BELKIN** Router Setup Home | Help | Logout | Intern

**LAN Setup**  
LAN Settings  
DHCP Client List  
Static Routing

**Internet WAN**  
Connection Type  
DNS  
MAC Address Cloning

**Wireless**  
Channel and SSID  
Security  
Wi-Fi Protected Setup  
Guest Access  
Use as Access Point

**QoS**  
QoS Profiles  
Traffic Statistics

**Firewall**  
Virtual Servers  
MAC Address Filtering  
Access Control  
DMZ  
DDNS  
WAN Ping Blocking  
Security Log

**Utilities**  
Restart Router  
Restore Factory Defaults  
Save/Backup Settings  
Restore Previous Settings  
Firmware Update  
System Settings

### Firewall > Virtual Servers

This function will allow you to route external (Internet) calls for services such as a web server (port 80), FTP server (Port 21), or other applications through your Router to your internal network. [More Info](#)

Add Active Worlds

Clear entry 1

|    | Enable                              | Description | Inbound port | Type | Private IP address | Private port |
|----|-------------------------------------|-------------|--------------|------|--------------------|--------------|
| 1  | <input checked="" type="checkbox"/> | IPCAM       | 101          | BOTH | 192.168.2.56       | 101          |
| 2  | <input type="checkbox"/>            |             |              | BOTH | 192.168.2.         |              |
| 3  | <input type="checkbox"/>            |             |              | BOTH | 192.168.2.         |              |
| 4  | <input type="checkbox"/>            |             |              | BOTH | 192.168.2.         |              |
| 5  | <input type="checkbox"/>            |             |              | BOTH | 192.168.2.         |              |
| 6  | <input type="checkbox"/>            |             |              | BOTH | 192.168.2.         |              |
| 7  | <input type="checkbox"/>            |             |              | BOTH | 192.168.2.         |              |
| 8  | <input type="checkbox"/>            |             |              | BOTH | 192.168.2.         |              |
| 9  | <input type="checkbox"/>            |             |              | BOTH | 192.168.2.         |              |
| 10 | <input type="checkbox"/>            |             |              | BOTH | 192.168.2.         |              |

**DLINK:**

- (1) Login the router.
- (2) Choose “Advanced”, select “Virtual Servers”
- (3) Input the port, IP address, Protocol, then click save.

Note: The “public port” & “private port” should be the same as camera’s port, choose the protocol to be “both”.

**24 --- VIRTUAL SERVERS LIST**

| Name       | Application Name | IP Address    | Public Port | Private Port | Protocol | Schedule | Inbound Filter |
|------------|------------------|---------------|-------------|--------------|----------|----------|----------------|
| rivomaxcam | HTTP             | 192.168.0.107 | 81          | 81           | Both     | Always   | Allow All      |
|            | Application Name | 0.0.0.0       | 0           | 0            | TCP      | Always   | Allow All      |
|            | Application Name |               | 0           | 0            | TCP      | Always   | Allow All      |

After all these 4 steps done, then you can use the DDNS freely, check the DDNS status from the camera as below, and get the link of DDNS for internet view.

Step: “Login”>”System”>”Device Info”:

| Device Status                  |   |
|--------------------------------|---|
| Device ID                      | 000000256720                              |
| Device Firmware Version        | 17.25.2.30                                |
| Device Embedded Web UI Version | 20.8.3.30                                 |
| Alias                          | Test                                      |
| Alarm Status                   | None                                      |
| DDNS Status                    | 3322 Succeed http://jerryjwb.3322.org:128 |
| UPnP Status                    | UPnP Succeed                              |

| Device Status                  |  |
|--------------------------------|--|
| Device ID                      | 00606E8AF1C9                                   |
| Device Firmware Version        | 17.25.2.30                                     |
| Device Embedded Web UI Version | 20.8.3.30                                      |
| Alias                          | demo   |
| Alarm Status                   | None   |
| DDNS Status                    | aipcam.com Succeed http://a5618.aipcam.com:191 |
| UPnP Status                    | No Action                                      |

## Q4: How to know the WAN IP of the device.

1. From internet.

If you want to know the WAN IP of your device, please go to

<http://www.whatismyip.com>. You will find the current WAN IP of your device.



2. From router.

You can also get the WAN IP address from your router.

## Q5: How to register a third party DDNS account

For example, you can go to DynDNS website to register a free account.

<http://www.dyndns.org> / <http://www.dyndns.com>.

1. Click **Sign up FREE**.

The banner features the DynDNS logo, a search bar, and navigation links. The main headline is "Access Devices From Anywhere" with a "Sign up FREE" button circled in red. A secondary graphic says "DNS IS SEXY" with social media links. Below the banner are two buttons: "Free Domain Name" and "Managed DNS & Domain Name".

2. Choose **Sign Up** under **FREE**.

| Most Popular   | DynDNS Pro   | DynDNS Custom  |
|--|--|--|
| <p><b>DynDNS Free</b></p> <p><b>FREE</b></p> <ul style="list-style-type: none"> <li>Get a free domain name</li> <li>Update monthly to avoid expiration</li> <li>Use with Windows, OSX, routers &amp; more</li> <li>Free email and community support</li> </ul> <p><b>Sign Up</b></p> | <p><b>\$15/yr</b></p> <ul style="list-style-type: none"> <li>Up to 30 Pro domain names</li> <li>Never expires, just works</li> <li>...also works with TSIG clients</li> <li>Access to phone technical support</li> </ul> <p><b>Sign Up</b></p> | <p><b>\$29<sup>95</sup>/yr</b></p> <ul style="list-style-type: none"> <li>DNS hosting for yourdomain.com</li> <li>Branded URL-shortening with WebHop</li> <li>...also works with Apple AirPort &amp; Bonjour</li> <li>Access to phone technical support</li> </ul> <p><b>Sign Up</b></p> |

3. Do the follow steps:

The screenshot shows the "Add New Hostname" form. The "Hostname" field contains "ipcamera" and the domain dropdown is set to "dyndns.org". The "Service Type" is "Host with IP address". The "IP Address" field contains "183.16.183.45" with a red arrow pointing to it from the text "Click here to get the IP address". Below the IP field, there is a link: "your current location's IP address is 183.16.183.45".

My Cart  
0 items

**WE'RE HIRING**

Powered by Dyn

Mail Routing:  I have mail server with another name and would like to add MX hostname...

What do you want to use this host for?  
Select services and devices you would like to use with this hostname.

Work From Home Office or VPN:

vpn remote file access remote desktop mail server web server  
chat server ftp backup ssh database voip

Hosting and Design For Web Sites and Blogs:

blog gallery wiki portfolio ecommerce web page

Remote Access For Devices:

dvr webcam data storage cctv printer alarm and security  
thermostat weather station game server home automation

**Add To Cart**

Then choose **Add to Cart**.

- Set the username and password as below:

Create account or log in to continue:

Username:

Password:

Confirm password:

Email:

Confirm email:

Subscribe to:

- DynDNS.com newsletter  
(1 or 2 per month)
- Dyn Inc. press releases
- Remove HTML formatting from email

1

Already Registered?

Username

Password

[Forgot your password?](#)

Security Image:

|   |   |   |   |   |
|---|---|---|---|---|
| 1 | 3 | 3 | 1 | 7 |
|---|---|---|---|---|

2

Enter the numbers from the above image:

I agree with the [acceptable use policy \(AUP\)](#) and [privacy policy](#).

3

4

After these settings have been done, it will send an email to your mailbox to activate this account.

- Please login your email box, and open the active link you get by email, then it will go to the activate page to get this account active.

You will get all the details of your DDNS, such as hostname, WAN IP address etc.

**Thanks for your support and attention, for further operation details, please check the full version user manual of our IP Cameras!**