

Wired/Wireless IP Camera

Quick Installation Guide

(IE Browser)

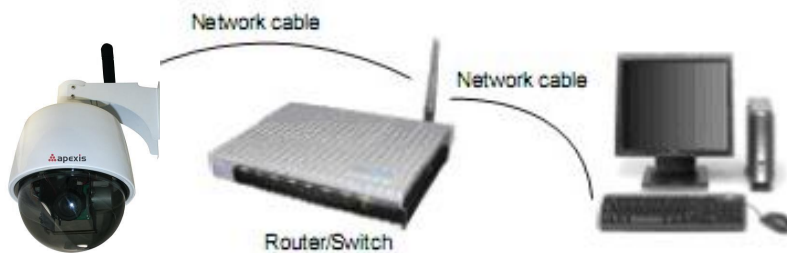
Model: APM-J901-Z-WS



Shenzhen Apexis Electronic Co., Ltd.

Step 1: Hardware Installation.

1. Install the Wi-Fi antenna.
2. Plug the power adaptor into camera.
3. Plug the network cable into camera, the other side to the router/switch.



Step 2: Software Installation.



Install the follow software:

1. **IP Camera Tool:** Open the CD, click "**IPCamSetup.exe**"—"Next"—"Next"—"Close".
2. **ActiveX:** Click "**Appinstall.exe**"—"Next"—"Install"—"Finish".



After this done, the icon "IP Camera Tool" will be displayed on desktop.

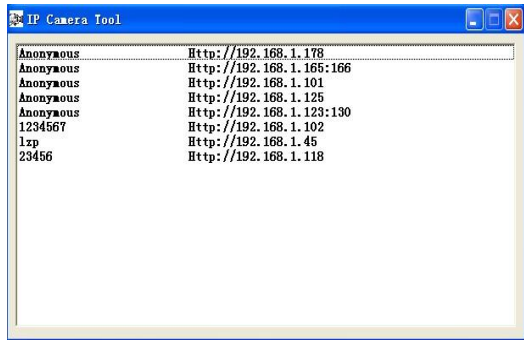
Step 3: Real-time Video Demonstration.

1. Login:

Double click "**IP Camera Tool**" icon on desktop, search the IP address, choose the one of your camera, double click to go to IE login interface.

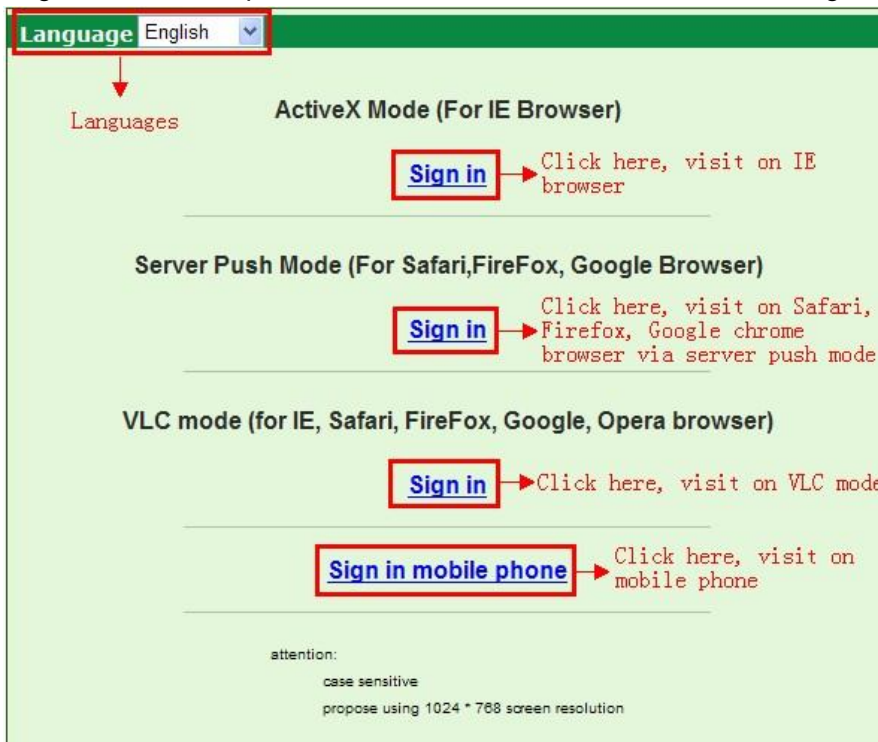
Default username: admin

Password: no password.



2. Choose the language.

English, Chinese, Spanish, Korean, German, French, Italian, Portuguese etc optional.



3. Choose the work mode.

IE browser: choose ActiveX mode.

Safari, Firefox, Google chrome browser: Server push mode.

VLC Mode: work with audio.

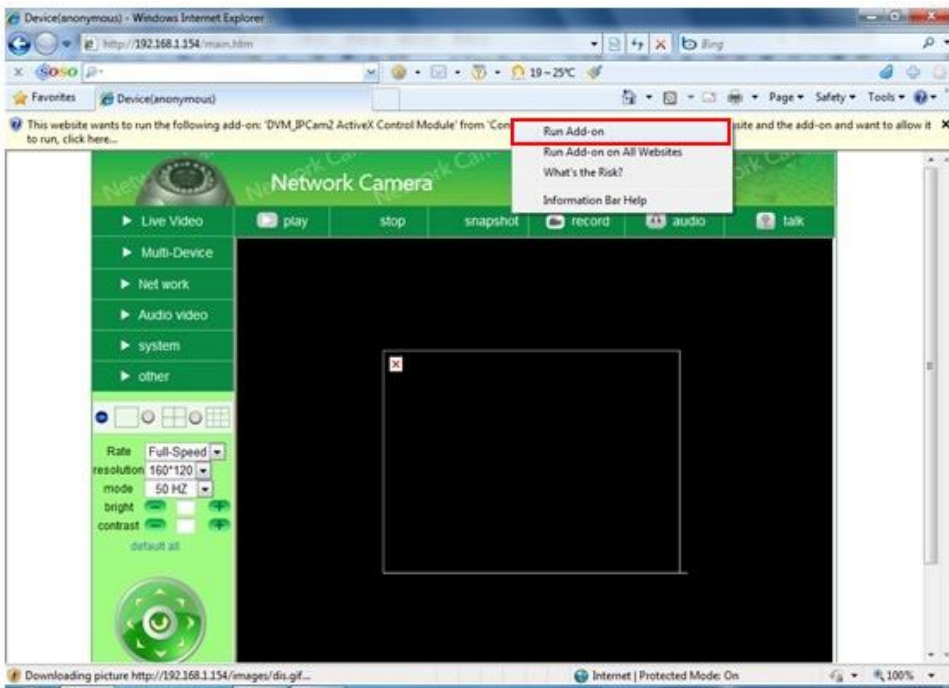
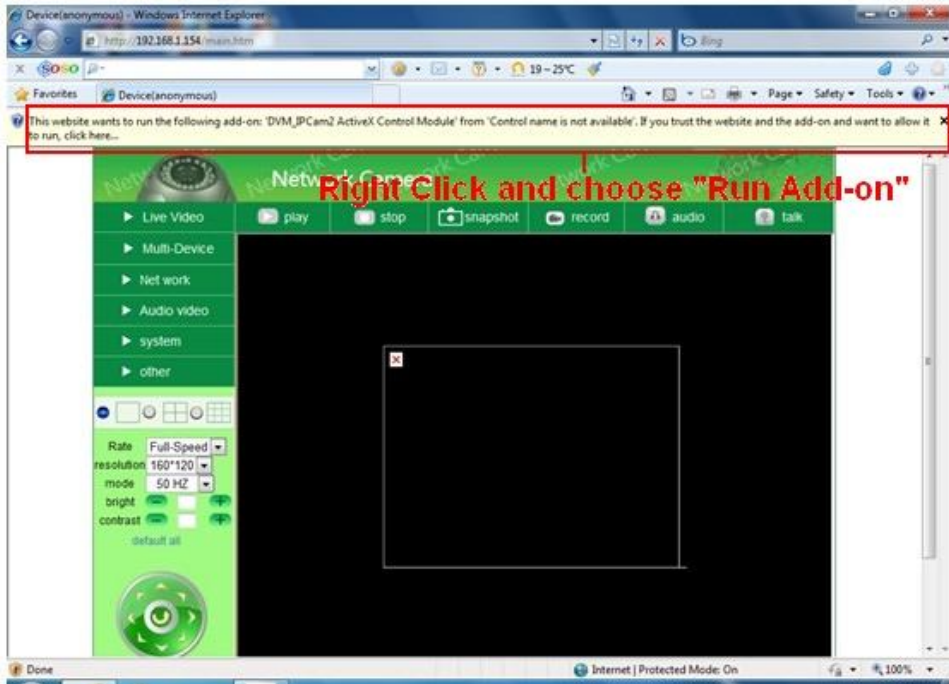
Mobile phone: sign in mobile phone mode.

4. Sign in.

Click Sign In, then can get video on real-time.

Q1: No pictures problem with ActiveX Settings for IE Browser

If use IE browser to connect the camera for the 1st time, maybe there is no image displayed, there will be an ActiveX prompt, please click the prompt and choose **Run Add-on**, refresh the IE interface, and login the camera again, then will see live video.



If there is still no live video after run ActiveX, please try to enable the ActiveX options of IE security settings, please do the follow steps:

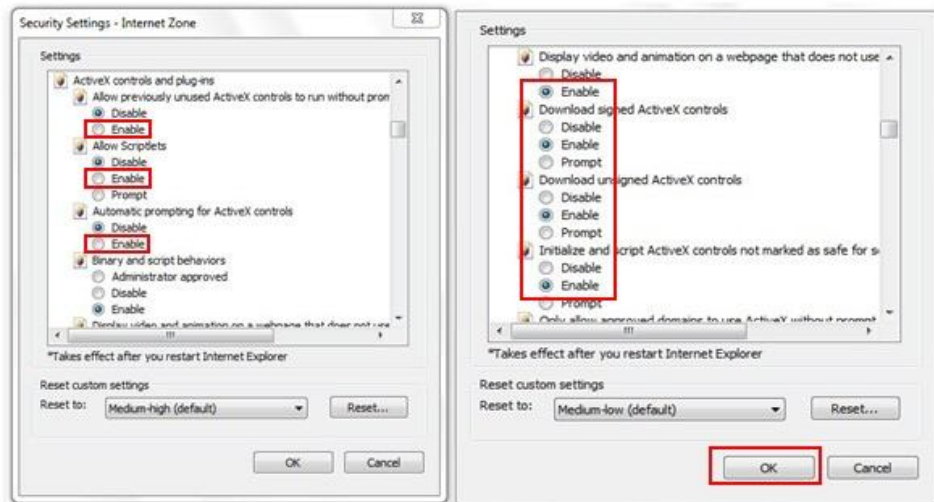
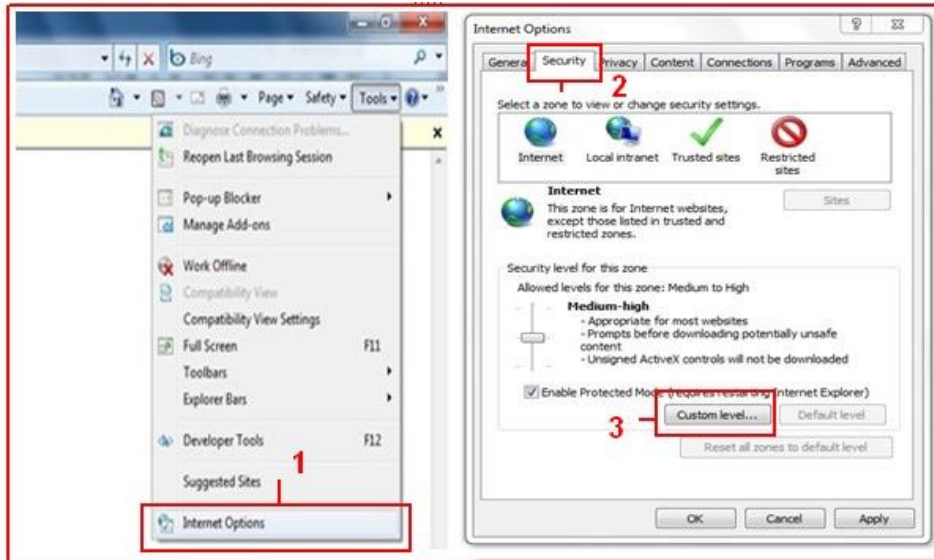
1. Close the firewall of your computer.

- Change the ActiveX settings, “IE” browser > “Tool” > “Internet Options” > “Security”> “Custom Level” > “ActiveX control and Plug-ins”, all the ActiveX options set to be “Enable”: Especially:

Enable: Download unsigned ActiveX controls

Enable: Initialize and script ActiveX controls not marked as safe

Enable: Run ActiveX controls and plu-ins



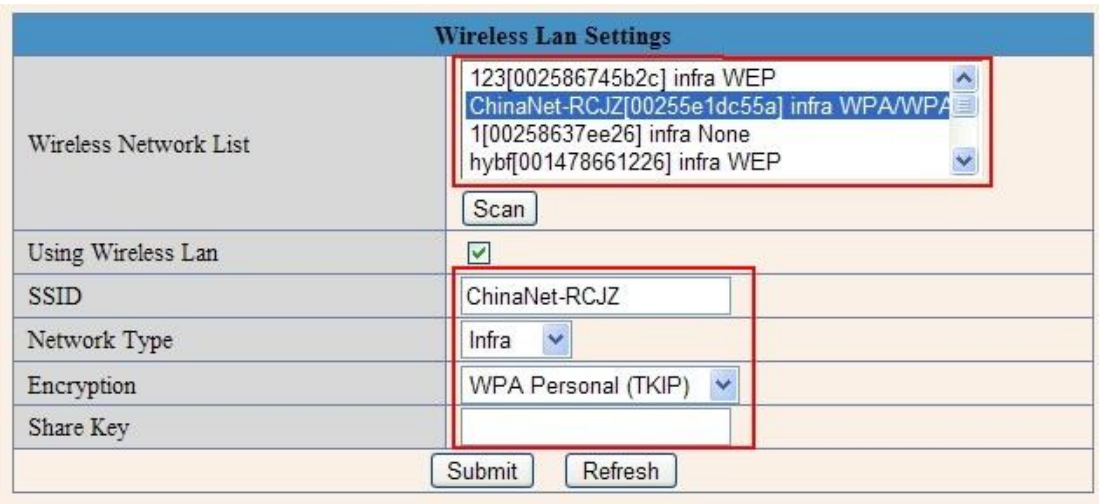
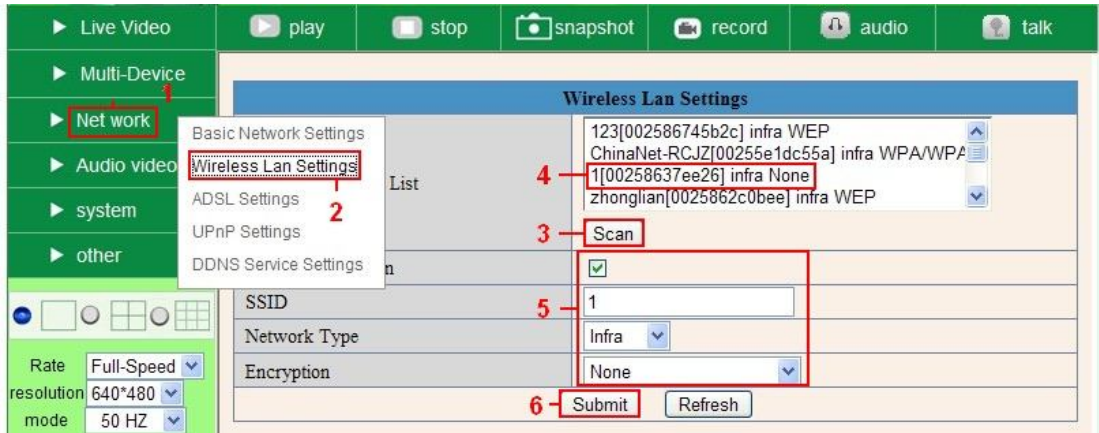
In Addition: you can also click “start” menu->“Internet Explorer”, choose “Internet attributes “ to enter, or via “Control Panel” ->“Internet Explorer”, enter to Security setting.

- If there is still no image, please close your anti-virus software, and then try step 1 & 2 again.

Q2: How to do Wireless Settings

- Make sure the router is a wireless router.
- Make sure the Wi-Fi antenna installed.
- Make sure whether there is encryption of the WLAN of router, if there is encryption, keep the key.
- Login the camera, click “Network”>“Wireless Lan Settings”>“Scan”, please scan 2

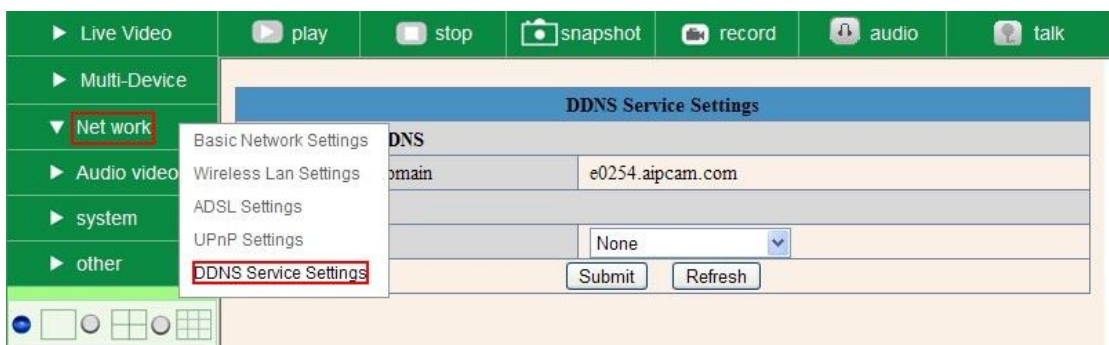
- times, then you will find the WLAN from the list, choose the one you use.
- If there is no encryption, just click **“Submit”**, if there is encryption, please input the key, then click **“Submit”**.
 - Wait about 30 seconds, the camera will reboot, then unplug the network cable.



Q3: How to use DDNS

- Login the camera:**

Click **“Network”>“DDNS Service Settings”**.



2. Choose the DDNS, there are 2 options:

Manufacturer's DDNS: This domain is provided by manufacturer.

Third Party DDNS: This domain is provided by the 3rd party, such as DynDNS, Oray, 3322 etc.

DDNS Service Settings	
Manufacturer's DDNS	
Manufacturer's Domain	e0254.aipcam.com
Third Party DDNS	
DDNS Service	<div style="border: 1px solid black; padding: 2px;"><div style="border: 1px solid black; padding: 2px;">None</div><div style="border: 1px solid black; padding: 2px;">None</div><div style="border: 1px solid black; padding: 2px;">Oray.net</div><div style="border: 1px solid black; padding: 2px;">DynDns.org(dyndns)</div><div style="border: 1px solid black; padding: 2px;">DynDns.org(statdns)</div><div style="border: 1px solid black; padding: 2px;">DynDns.org(custom)</div><div style="border: 1px solid black; padding: 2px;">3322.org(dyndns)</div><div style="border: 1px solid black; padding: 2px;">3322.org(statdns)</div></div>

Third Party DDNS

If you use third party DDNS, please choose the server you use, such as "3322.org" or "dyndns.org" as below:

DDNS Service Settings	
Manufacturer's DDNS	
Manufacturer's Domain	e0254.aipcam.com
Third Party DDNS	
DDNS Service	DynDns.org(dyndns) ▼
DDNS User	ipcamdemo
DDNS Password	•••••
DDNS Host	ipcamdemo.dyndns.org
DDNS or Proxy Server	
DDNS or Proxy Port	
Re-Update Ignoring All Errors	<input type="checkbox"/> never do this unless your hostname has been unblocked
proxy config is needed if the device is in China Mainland or HongKong	
<input type="button" value="Submit"/> <input type="button" value="Refresh"/>	

DDNS Service Settings	
Manufacturer's DDNS	
Manufacturer's Domain	e0254.aipcam.com
Third Party DDNS	
DDNS Service	3322.org(dyndns) ▼
DDNS User	ipcamdemo
DDNS Password	••••••
DDNS Host	ipcamdemo.3322.org
<input type="button" value="Submit"/> <input type="button" value="Refresh"/>	

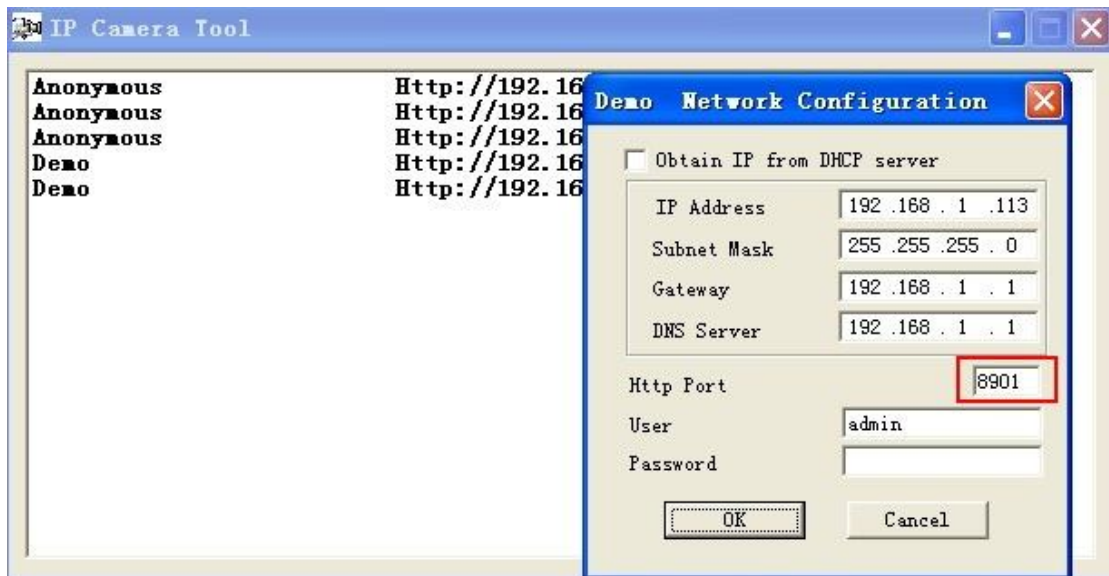
You have to register an account firstly, keep the user, password, host, then fill in it.

Note: Only one DDNS can be chosen, for example, if you use manufacturer's DDNS, the 3rd one won't work, if use the 3rd DDNS, the manufacturer's one won't work.

3. **Change the camera's port.**

The default port of camera is "80", please change "80" to any other one you like, such as "81", "100", "8091" etc.

Click "OK", the camera will reboot, wait about 30 seconds.



Make sure the "Subnet Mask", "Gateway", "DNS Server" is the same as your router.

4. **Set Port Forwarding in the router.**

This is the most important step. Set port forwarding in router refer to the IP of your camera correctly, then the DDNS will work. Because there are so many kinds of routers from all over the world, so it's difficult to show a fix steps, but there are some samples of different routers' port forwarding settings as below, just for reference:

TP-LINK:

(1) Login the router.



(2) Choose “Forwarding”, select “Virtual Servers”

(3) Click the Add New button, pop-up below:

Add or Modify a Virtual Server Entry

Service Port: (00X-XX or XX)

IP Address:

Protocol: ALL

Status: Enabled

Common Service Port: -Select One-

Fill the service port (**except 80**), IP address of the camera, then click Save
 The port and IP address should be the same as Camera.

BELKIN:

(1) Login the router.

(2) Choose “Firewall”, select “Virtual Servers”

(3) Input the port (**except 80**) and IP address, then click save.

Note: The port and IP address should be the same as Camera.

BELKIN Router Setup
Home | Help | Logout | Intern

LAN Setup

LAN Settings

DHCP Client List

Static Routing

Internet WAN

Connection Type

DNS

MAC Address Cloning

Wireless

Channel and SSID

Security

Wi-Fi Protected Setup

Guest Access

Use as Access Point

QoS

QoS Profiles

Traffic Statistics

Firewall

Virtual Servers

MAC Address Filtering

Access Control

DMZ

DDNS

WAN Ping Blocking

Security Log

Utilities

Restart Router

Restore Factory Defaults

Save/Backup Settings

Restore Previous Settings

Firmware Update

System Settings

Firewall > Virtual Servers

This function will allow you to route external (Internet) calls for services such as a web server (port 80), FTP server (Port 21), or other applications through your Router to your internal network. [More Info](#)

Add: Active Worlds

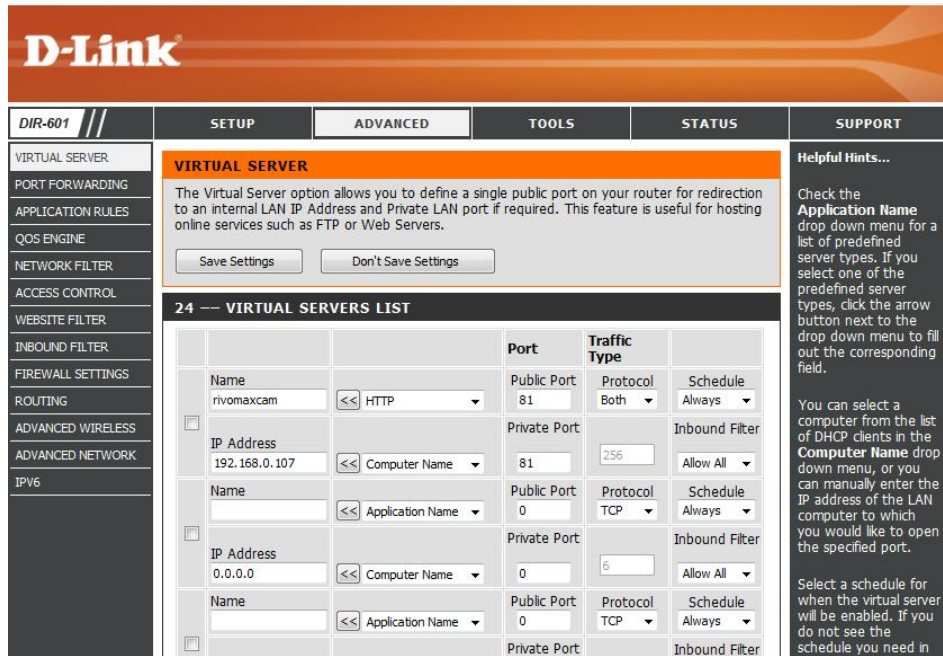
Clear entry: 1

	Enable	Description	Inbound port	Type	Private IP address	Private port
1	<input checked="" type="checkbox"/>	IPCAM	101	BOTH	192.168.2.56	101
2	<input type="checkbox"/>			BOTH	192.168.2.	
3	<input type="checkbox"/>			BOTH	192.168.2.	
4	<input type="checkbox"/>			BOTH	192.168.2.	
5	<input type="checkbox"/>			BOTH	192.168.2.	
6	<input type="checkbox"/>			BOTH	192.168.2.	
7	<input type="checkbox"/>			BOTH	192.168.2.	
8	<input type="checkbox"/>			BOTH	192.168.2.	
9	<input type="checkbox"/>			BOTH	192.168.2.	
10	<input type="checkbox"/>			BOTH	192.168.2.	

DLINK:

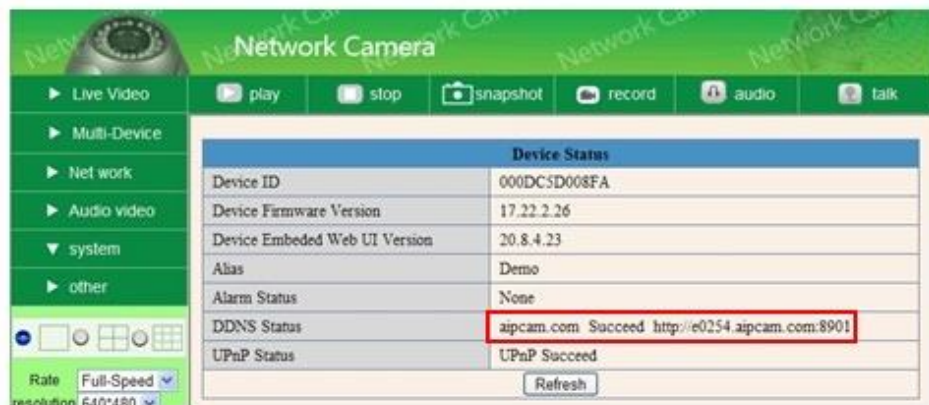
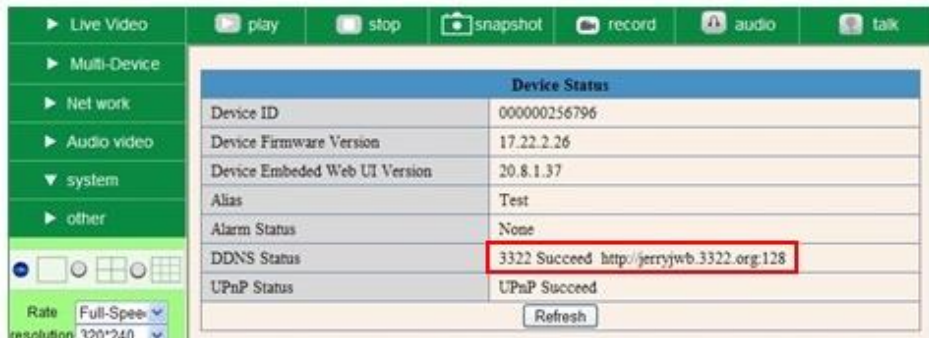
- (1) Login the router.
- (2) Choose “Advanced”, select “Virtual Servers”
- (3) Input the port, IP address, Protocol, then click save.

Note: The “public port” & “private port” should be the same as camera’s port, choose the protocol to be “both”.



After all these 4 steps done, then you can use the DDNS freely, check the DDNS status from the camera as below, and get the link of DDNS for internet view.

Step: “Login”>”System”>”Device Info”:



Q4: How to know the WAN IP of the device.

1. From internet.

If you want to know the WAN IP of your device, please go to

<http://www.whatismyip.com>. You will find the current WAN IP of your device.



2. From router.

You can also get the WAN IP address from your router.

Q5: How to register a third party DDNS account

For example, you can go to DynDNS website to register a free account.

<http://www.dyndns.org> / <http://www.dyndns.com>.

1. Click **Sign up FREE**.



2. Choose **Sign Up** under **FREE**.

Most Popular	DynDNS Pro	DynDNS Custom
DynDNS Free	DynDNS Pro	DynDNS Custom
FREE	\$15/yr	\$29⁹⁵/yr
Get a free domain name	Up to 30 Pro domain names	DNS hosting for yourdomain.com
Update monthly to avoid expiration	Never expires, just works	Branded URL-shortening with WebHop
Use with Windows, OSX, routers & more	...also works with TSIG clients	...also works with Apple AirPort & Bonjour
Free email and community support	Access to phone technical support	Access to phone technical support
Sign Up	Sign Up	Sign Up

3. Do the follow steps:

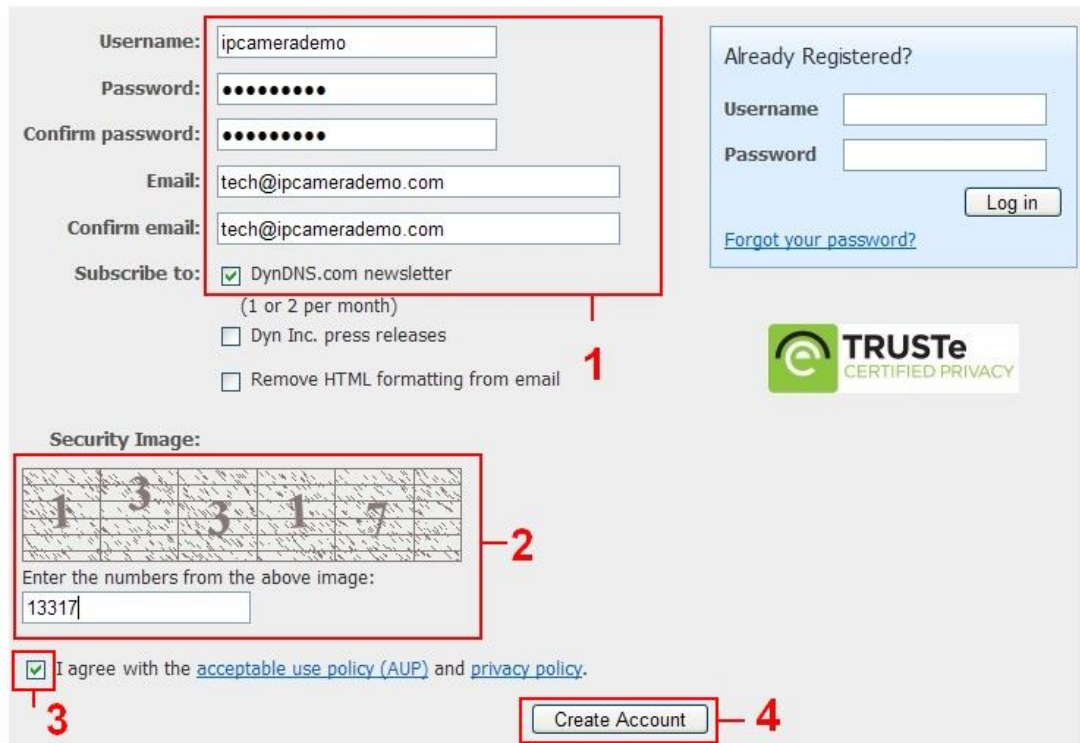
The screenshot shows the 'Add New Hostname' form in the DynDNS account interface. The form is divided into several sections:

- My Account** sidebar on the left with links for My Services, My Services, Zone Level Services, Host Services, Dynect SMB, MailHop Outbound, SSL Certificates, Renew Services, Auto Renew Settings, Sync Expirations, Account Settings, and Billing.
- My Cart** section showing 0 items.
- WE'RE HIRING** banner with 'Powered by Dyn' logo.
- Add New Hostname** main form:
 - Message: "You don't currently have a [Dynamic DNS Pro service](#) in your account. To get the full benefits of Dynamic DNS, including premium subscriber domains and other features, [add Dynamic DNS Pro to your shopping cart](#) (or try it with \$1.99 [monthly subscription](#))." [Host Services](#)
 - Fill in a name you want** / **Choose dyndns.org here**: Hostname: · (dropdown)
 - Wildcard:** create "*"*.host.dyndns-yourdomain.com" alias (for example to use same settings for www.host.dyndns-yourdomain.com)
 - Service Type:** Host with IP address, WebHop Redirect (URL forwarding service), Offline Hostname
 - IP Address:** [Click here to get the IP address](#)
Your current location's IP address is 183.16.183.45
 - TTL value is 60 seconds. [Edit TTL...](#)
 - Mail Routing:** I have mail server with another name and would like to add MX hostname...
 - What do you want to use this host for?** Select services and devices you would like to use with this hostname.
 - Work From Home Office or VPN: vpn, remote file access, remote desktop, mail server, web server, chat server, ftp backup, ssh, database, voip
 - Hosting and Design For Web Sites and Blogs: blog, gallery, wiki, portfolio, ecommerce, web page
 - Remote Access For Devices: dvr, webcam, data storage, cctv, printer, alarm and security, thermostat, weather station, game server, home automation
 - Add To Cart** button (circled in red)

Then choose **Add to Cart**.

4. Set the username and password as below:

Create account or log in to continue:



The screenshot shows the account creation interface. A red box labeled '1' encloses the registration form fields: Username (ipcamerademo), Password (masked with dots), Confirm password (masked with dots), Email (tech@ipcamerademo.com), Confirm email (tech@ipcamerademo.com), and a checked checkbox for 'DynDNS.com newsletter'. To the right is a 'Log in' section with fields for Username and Password, and a 'Log in' button. Below the registration form is a 'Security Image' section labeled '2', which contains a grid of numbers (1, 3, 3, 1, 7) and an input field with '13317'. Below the security image is a checked checkbox labeled '3' for 'I agree with the acceptable use policy (AUP) and privacy policy.' At the bottom right is a 'Create Account' button labeled '4'. A 'TRUSTe CERTIFIED PRIVACY' logo is also visible.

After these settings have been done, it will send an email to your mailbox to activate this account.

5. Please login your email box, and open the active link you get by email, then it will go to the activate page to get this account active.

You will get all the details of your DDNS, such as hostname, WAN IP address etc.

Thanks for your support and attention, for further operation details, please check the full version user manual of our IP Cameras!