

Wired/Wireless IP Camera

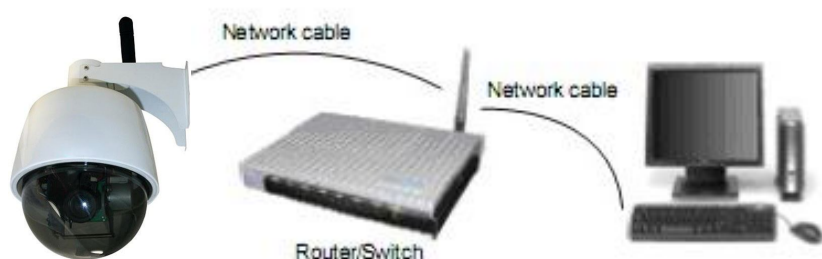
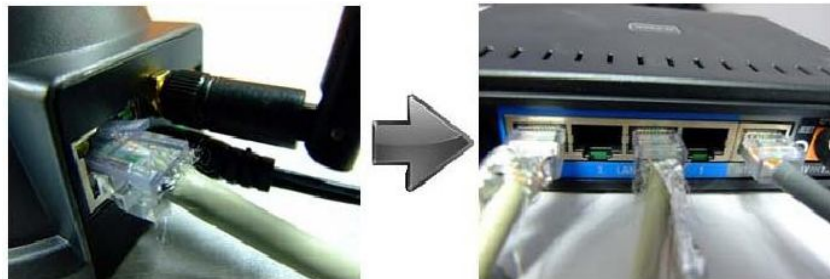
Quick Installation Guide

(IE Browser)



Step 1: Hardware Installation.

1. Install the Wi-Fi antenna.
2. Plug the power adaptor into camera.
3. Plug the network cable into camera, the other side to the router/switch.




Step 2: Software Installation.



Install the follow software:

1. **IP Camera Tool**: Open the CD, click "**IPCamSetup.exe**"—"Next"—"Next"—"Close".
2. **ActiveX**: Click "**Appinstall.exe**"—"Next"—"Install"—"Finish".



After this done, the icon "IP Camera Tool"  will be displayed on desktop.

Step 3: Real-time Video Demonstration.

1. **Login**:

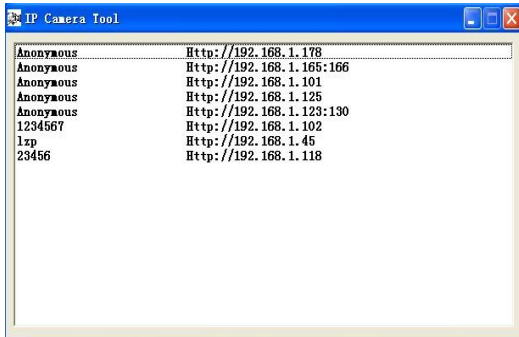
Double click "**IP Camera Tool**" icon on desktop, search the IP address, choose the one of your camera, double click

More Security, More Convenience

to go to IE login interface.

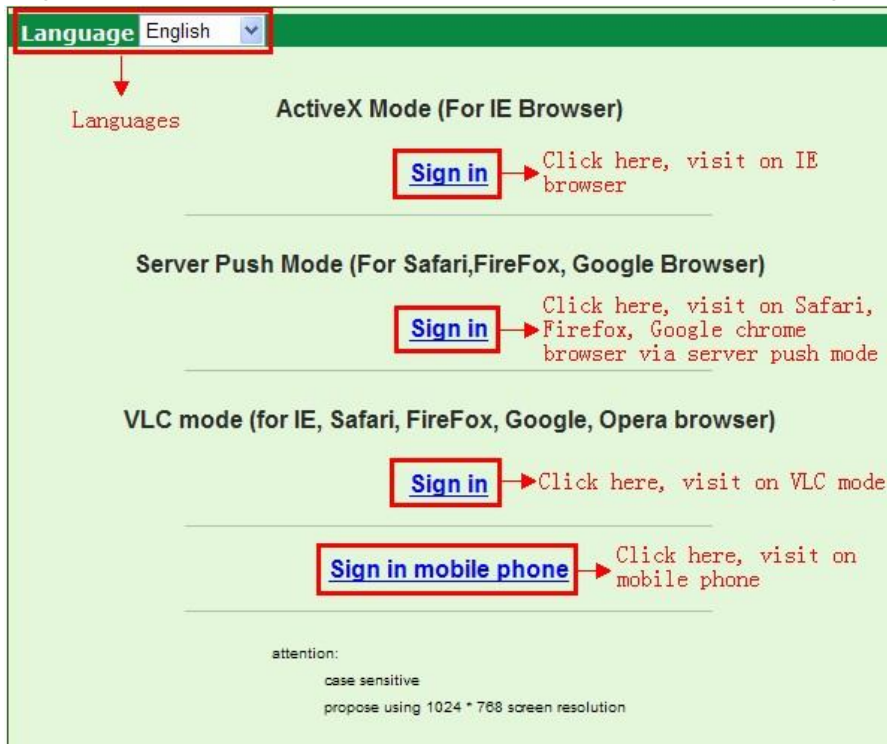
Default username: admin

Password: no password.



2. Choose the language.

English, Chinese, Spanish, Korean, German, French, Italian, Portuguese etc optional.



3. Choose the work mode.

IE browser: choose ActiveX mode.

Safari, Firefox, Google chrome browser: Server push mode.

VLC Mode: work with audio.

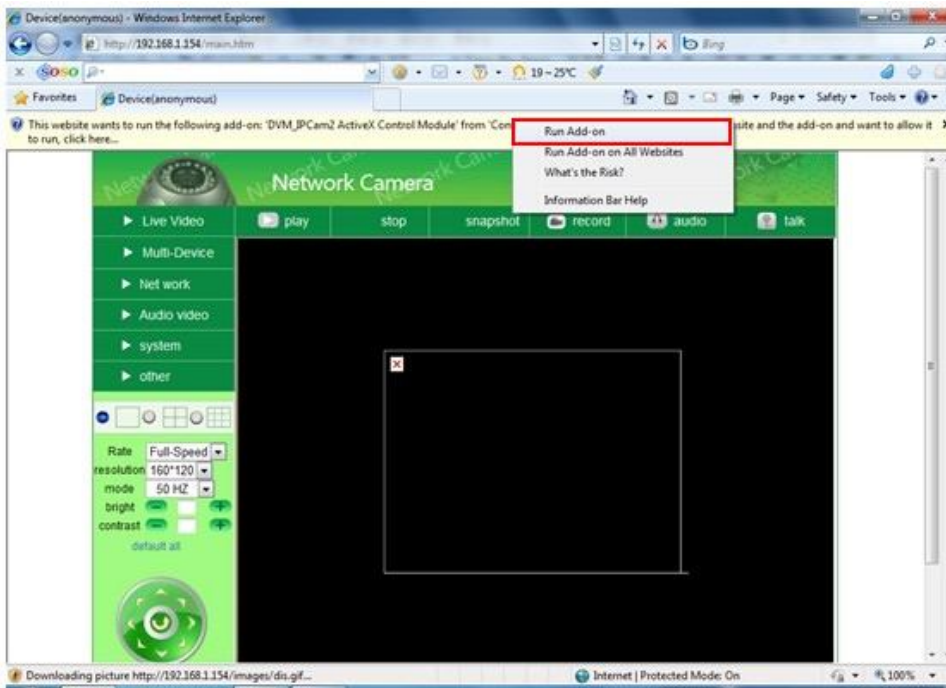
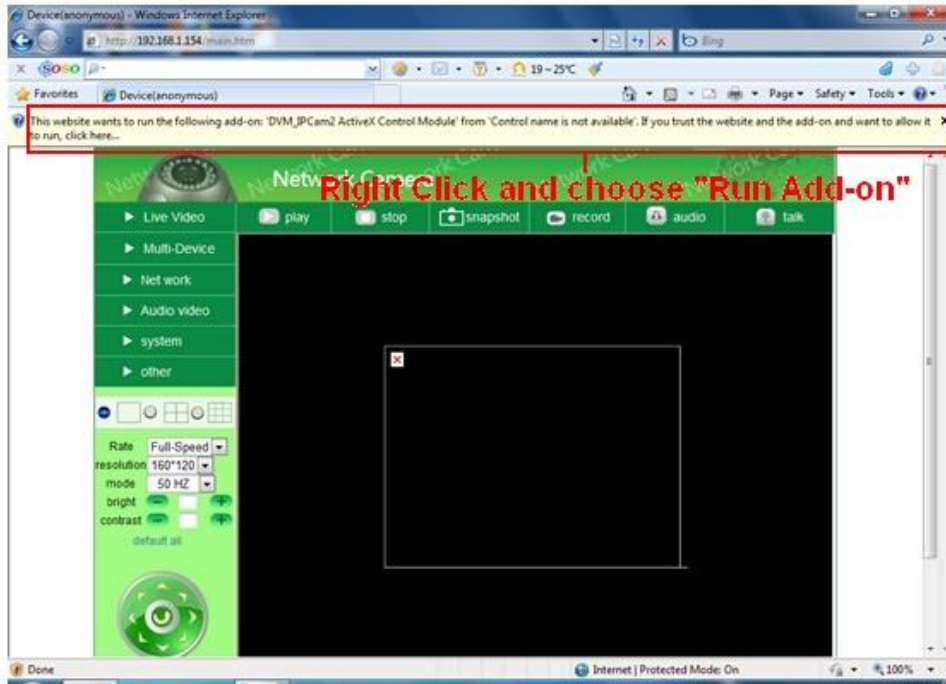
Mobile phone: sign in mobile phone mode.

4. Sign in.

Click Sign In, then can get video on real-time.

Q1: No pictures problem with ActiveX Settings for IE Browser

If use IE browser to connect the camera for the 1st time, maybe there is no image displayed, there will be an ActiveX prompt, please click the prompt and choose **Run Add-on**, refresh the IE interface, and login the camera again, then will see live video.



If there is still no live video after run ActiveX, please try to enable the ActiveX options of IE security settings, please do the follow steps:

1. Close the firewall of your computer.

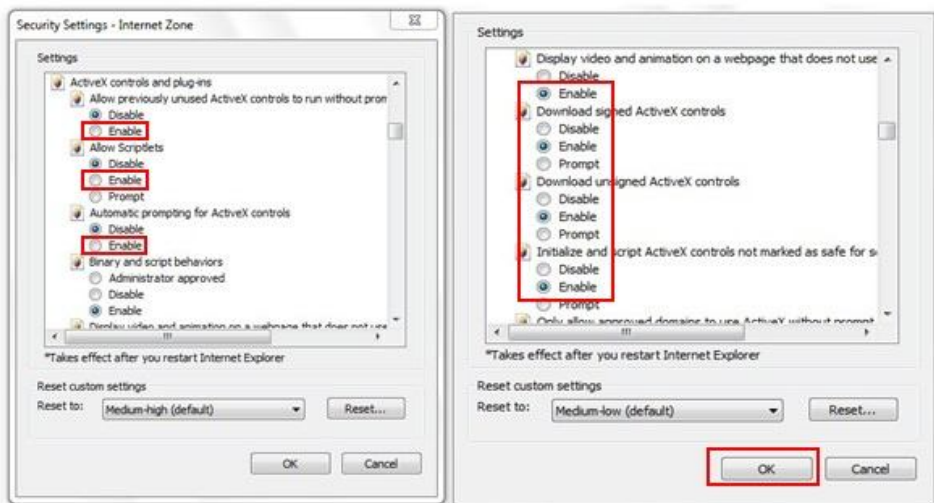
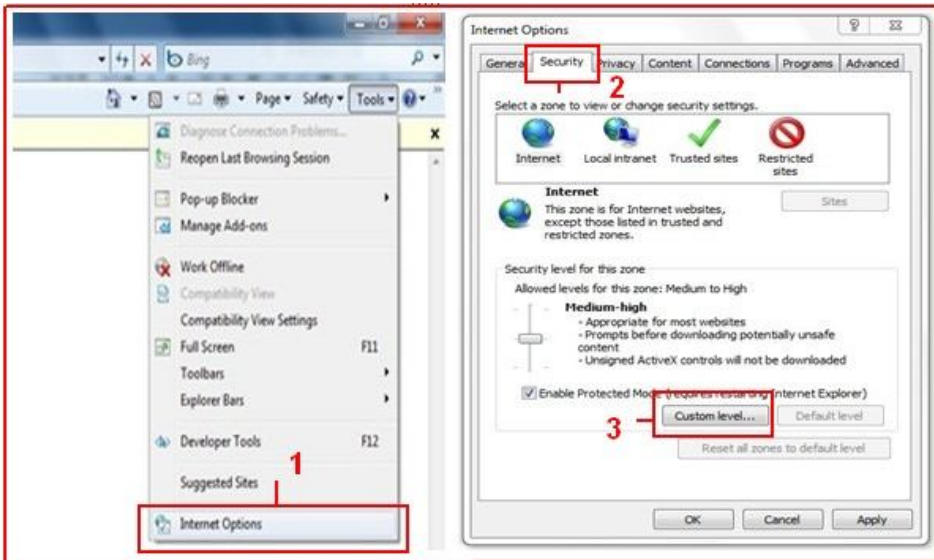
More Security, More Convenience

2. Change the ActiveX settings, “IE” browser > “Tool” > “Internet Options” > “Security” > “Custom Level” > “ActiveX control and Plug-ins”, all the ActiveX options set to be “Enable”: Especially:

Enable: Download unsigned ActiveX controls

Enable: Initialize and script ActiveX controls not marked as safe

Enable: Run ActiveX controls and plu-ins



In **Additional**: you can also click “start” menu->“Internet Explorer”, choose “Internet attributes “ to enter, or via “Control Panel” ->“Internet Explorer”, enter to Security setting.

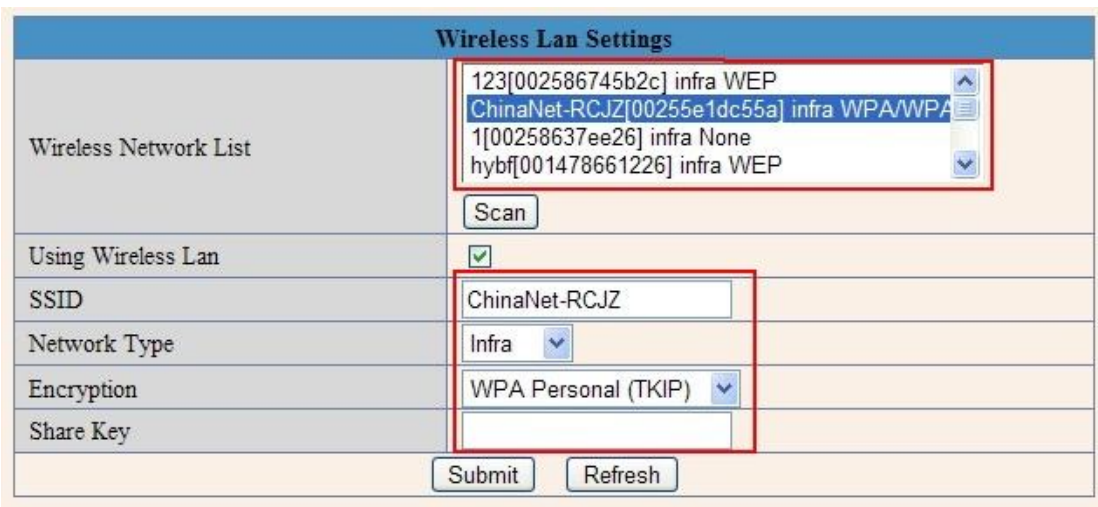
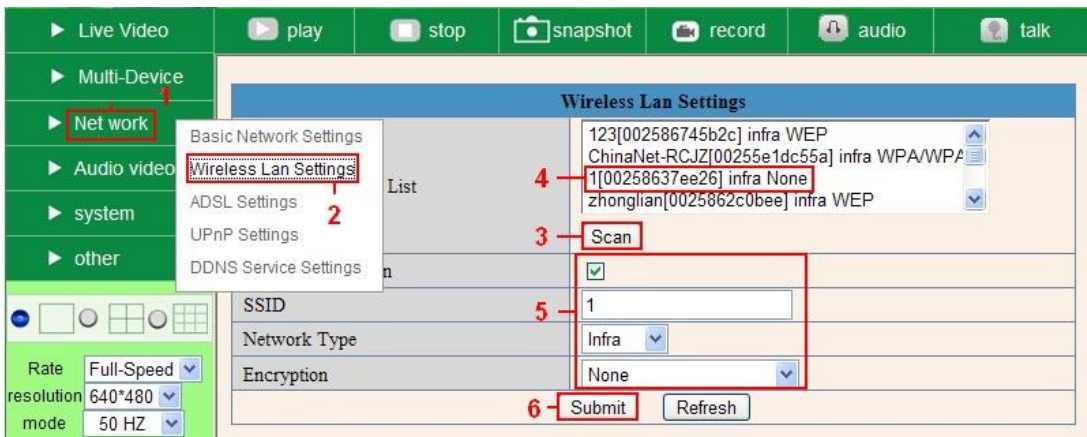
3. If there is still no image, please close your anti-virus software, and then try step 1 & 2 again.

Q2: How to do Wireless Settings

1. Make sure the router is a wireless router.
2. Make sure the Wi-Fi antenna installed.
3. Make sure whether there is encryption of the WLAN of router, if there is encryption, keep the key.
4. Login the camera, click “**Network**”>“**Wireless Lan Settings**”>“**Scan**”, please scan 2 times, then you will find the WLAN from the list, choose the one you use.
5. If there is no encryption, just click “**Submit**”, if there is encryption, please input the key, then click “**Submit**”.

More Security, More Convenience

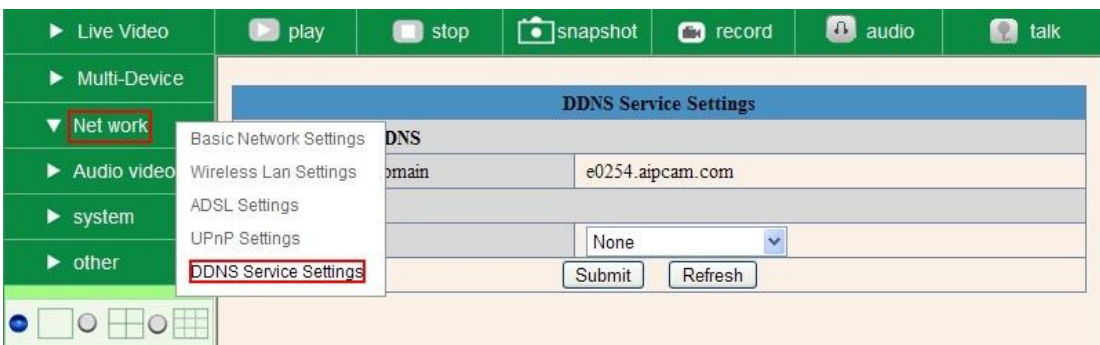
6. Wait about 30 seconds, the camera will reboot, then unplug the network cable.



Q3: How to use DDNS

1. Login the camera:

Click "Network">"DDNS Service Settings".



2. Choose the DDNS, there are 2 options:

Manufacturer's DDNS: This domain is provided by manufacturer.

More Security, More Convenience

Third Party DDNS: This domain is provided by the 3rd party, such as Dyndns, Oray, 3322 etc.

DDNS Service Settings	
Manufacturer's DDNS	
Manufacturer's Domain	e0254.aipcam.com
Third Party DDNS	
DDNS Service	None

DDNS Service dropdown menu options:

- None
- Oray.net
- DynDns.org(dyndns)
- DynDns.org(statdns)
- DynDns.org(custom)
- 3322.org(dyndns)
- 3322.org(statdns)

Third Party DDNS

If you use third party DDNS, please choose the server you use, such as "3322.org" or "dyndns.org" as below:

DDNS Service Settings	
Manufacturer's DDNS	
Manufacturer's Domain	e0254.aipcam.com
Third Party DDNS	
DDNS Service	DynDns.org(dyndns)
DDNS User	ipcamdemo
DDNS Password	••••••
DDNS Host	ipcamdemo.dyndns.org
DDNS or Proxy Server	
DDNS or Proxy Port	
Re-Update Ignoring All Errors	<input type="checkbox"/> never do this unless your hostname has been unblocked
proxy config is needed if the device is in China Mainland or HongKong	
<input type="button" value="Submit"/> <input type="button" value="Refresh"/>	

DDNS Service Settings	
Manufacturer's DDNS	
Manufacturer's Domain	e0254.aipcam.com
Third Party DDNS	
DDNS Service	3322.org(dyndns)
DDNS User	ipcamdemo
DDNS Password	••••••
DDNS Host	ipcamdemo.3322.org
<input type="button" value="Submit"/> <input type="button" value="Refresh"/>	

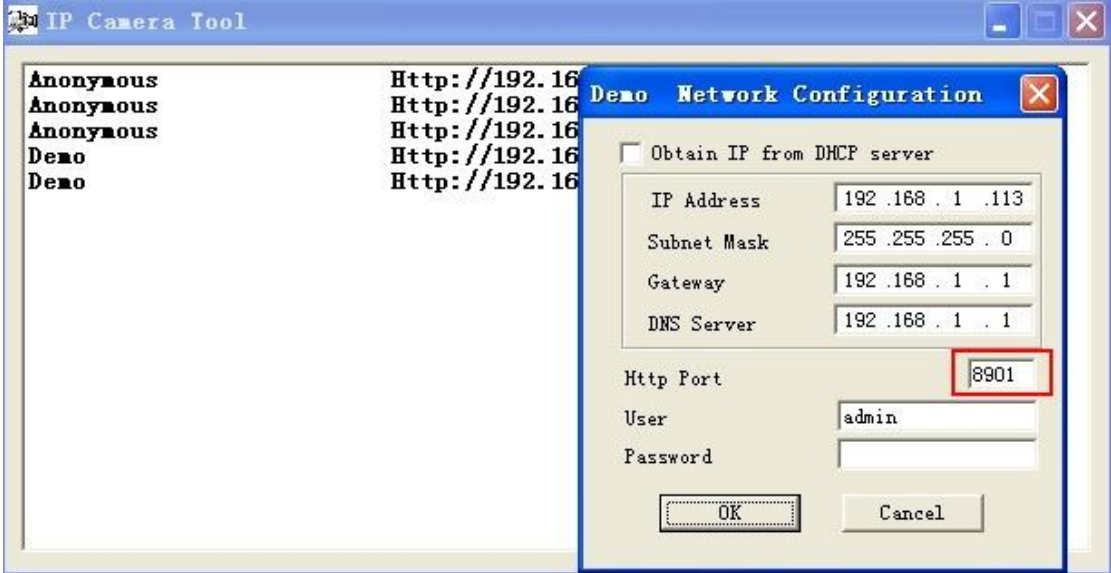
You have to register an account firstly, keep the user, password, host, then fill in it.

Note: Only one DDNS can be chosen, for example, if you use manufacturer's DDNS, the 3rd one won't work, if

use the 3rd DDNS, the manufacturer's one won't work.

3. **Change the camera's port.**

The default port of camera is "80", please change "80" to any other one you like, such as "81", "100", "8091" etc. Click "OK", the camera will reboot, wait about 30 seconds.



Make sure the "Subnet Mask", "Gateway", "DNS Server" is the same as your router.

4. **Set Port Forwarding in the router.**

This is the most important step. Set port forwarding in router refer to the IP of your camera correctly, then the DDNS will work. Because there are so many kinds of routers from all over the world, so it's difficult to show a fix steps, but there are some samples of different routers' port forwarding settings as below, just for reference:

TP-LINK:

(1) Login the router.



(2) Choose "Forwarding", select "Virtual Servers"

(3) Click the Add New button, pop-up below:

Add or Modify a Virtual Server Entry

Service Port: (XX-XX or XX)
IP Address:
Protocol: ALL
Status: Enabled
Common Service Port: -Select One-
Save Return

Fill the service port (except 80), IP address of the camera, then click Save
The port and IP address should be the same as Camera.

BELKIN:

- (1) Login the router.
- (2) Choose “**Firewall**”, select “**Virtual Servers**”
- (3) Input the port (**except 80**) and IP address, then click save.

Note: The port and IP address should be the same as Camera.

BELKIN Router Setup Home | Help | Logout | Intern...

Firewall > Virtual Servers

This function will allow you to route external (Internet) calls for services such as a web server (port 80), FTP server (Port 21), or other applications through your Router to your internal network. [More Info](#)

Add
 Clear entry

	Enable	Description	Inbound port	Type	Private IP address	Private port
1	<input checked="" type="checkbox"/>	IPCAM	101	BOTH	192.168.2.56	101
2	<input type="checkbox"/>			BOTH	192.168.2.	
3	<input type="checkbox"/>			BOTH	192.168.2.	
4	<input type="checkbox"/>			BOTH	192.168.2.	
5	<input type="checkbox"/>			BOTH	192.168.2.	
6	<input type="checkbox"/>			BOTH	192.168.2.	
7	<input type="checkbox"/>			BOTH	192.168.2.	
8	<input type="checkbox"/>			BOTH	192.168.2.	
9	<input type="checkbox"/>			BOTH	192.168.2.	
10	<input type="checkbox"/>			BOTH	192.168.2.	

DLINK:

- (1) Login the router.
- (2) Choose “**Advanced**”, select “**Virtual Servers**”
- (3) Input the port, IP address, Protocol, then click save.

Note: The “**public port**” & “**private port**” should be the same as camera’s port, choose the protocol to be “**both**”.

More Security, More Convenience

DIR-601 // SETUP ADVANCED TOOLS STATUS SUPPORT

VIRTUAL SERVER

The Virtual Server option allows you to define a single public port on your router for redirection to an internal LAN IP Address and Private LAN port if required. This feature is useful for hosting online services such as FTP or Web Servers.

Save Settings Don't Save Settings

24 — VIRTUAL SERVERS LIST

	Name	IP Address	Port	Traffic Type	Schedule
<input type="checkbox"/>	rivomaxcam	192.168.0.107	81	Both	Always
<input type="checkbox"/>	Application Name	0.0.0.0	0	TCP	Always
<input type="checkbox"/>	Application Name	0.0.0.0	0	TCP	Always

Helpful Hints...

Check the **Application Name** drop down menu for a list of predefined server types. If you select one of the predefined server types, click the arrow button next to the drop down menu to fill out the corresponding field.

You can select a computer from the list of DHCP clients in the **Computer Name** drop down menu, or you can manually enter the IP address of the LAN computer to which you would like to open the specified port.

Select a schedule for when the virtual server will be enabled. If you do not see the schedule you need in

After all these 4 steps done, then you can use the DDNS freely, check the DDNS status from the camera as below, and get the link of DDNS for internet view.

Step: **“Login”>“System”>“Device Info”**:

Device Status

Device ID	000000256796
Device Firmware Version	17.22.2.26
Device Embedded Web UI Version	20.8.1.37
Alias	Test
Alarm Status	None
DDNS Status	3322 Succeed http://jerrywb.3322.org:128
UPnP Status	UPnP Succeed

Refresh

Device Status

Device ID	000DCSD008FA
Device Firmware Version	17.22.2.26
Device Embedded Web UI Version	20.8.4.23
Alias	Demo
Alarm Status	None
DDNS Status	aipcam.com Succeed http://e0254.aipcam.com:8901
UPnP Status	UPnP Succeed

Refresh

Q4: How to know the WAN IP of the device.

1. From internet.

If you want to know the WAN IP of your device, please go to

<http://www.whatismyip.com>. You will find the current WAN IP of your device.



2. From router.

You can also get the WAN IP address from your router.

Q5: How to register a third party DDNS account

For example, you can go to DynDNS website to register a free account.

<http://www.dyndns.org> / <http://www.dyndns.com>.

1. Click **Sign up FREE**.



2. Choose **Sign Up** under **FREE**.

More Security, More Convenience

Most Popular	DynDNS Pro	DynDNS Custom
DynDNS Free	DynDNS Pro	DynDNS Custom
FREE	\$15/yr	\$29^{.95}/yr
Get a free domain name	Up to 30 Pro domain names	DNS hosting for yourdomain.com
Update monthly to avoid expiration	Never expires, just works	Branded URL-shortening with WebHop
Use with Windows, OSX, routers & more	...also works with TSIG clients	..also works with Apple AirPort & Bonjour
Free email and community support	Access to phone technical support	Access to phone technical support
Sign Up	Sign Up	Sign Up

3. Do the follow steps:

The screenshot shows the 'Add New Hostname' page in a web browser. The page has a left sidebar with 'My Account' and 'My Services' sections. The main content area is titled 'Add New Hostname' and contains the following elements:

- A message: "You don't currently have a [Dynamic DNS Pro service](#) in your account. To get the full benefits of Dynamic DNS, including premium subscriber domains and other features, [add Dynamic DNS Pro to your shopping cart](#) (or try it with \$1.99 [monthly subscription](#))." Red arrows point from this text to the 'Hostname' and 'IP Address' fields below.
- Hostname:** A text input field containing 'ipcamera' and a dropdown menu set to 'dyndns.org'. Red boxes highlight both fields, with red text above them: "Fill in a name you want" and "Choose dyndns.org here".
- Wildcard:** A checkbox labeled "create '*.host.dyndns-yourdomain.com' alias (for example to use same settings for www.host.dyndns-yourdomain.com)".
- Service Type:** Three radio buttons: "Host with IP address" (selected), "WebHop Redirect (URL forwarding service)", and "Offline Hostname".
- IP Address:** A text input field containing '183.16.183.45'. A red arrow points from the text "Click here to get the IP address" to the input field. Below the field, it says "Your current location's IP address is 183.16.183.45".
- TTL value:** A text input field containing '60' and a link "Edit TTL...".
- Mail Routing:** A checkbox labeled "I have mail server with another name and would like to add MX hostname...".
- What do you want to use this host for?:** A section with the text "Select services and devices you would like to use with this hostname." followed by several categories of services: "Work From Home Office or VPN:" (vpn, remote file access, remote desktop, mail server, web server), "Hosting and Design For Web Sites and Blogs:" (blog, gallery, wiki, portfolio, ecommerce, web page), and "Remote Access For Devices:" (dvr, webcam, data storage, cctv, printer, alarm and security, thermostat, weather station, game server, home automation).
- Add To Cart:** A button at the bottom right of the page, circled in red.

Then choose **Add to Cart**.

More Security, More Convenience

4. Set the username and password as below:

Create account or log in to continue:

The screenshot shows a registration form with the following fields and options:

- Username:** ipcamerademo
- Password:** [masked]
- Confirm password:** [masked]
- Email:** tech@ipcamerademo.com
- Confirm email:** tech@ipcamerademo.com
- Subscribe to:**
 - DynDNS.com newsletter (1 or 2 per month)
 - Dyn Inc. press releases
 - Remove HTML formatting from email

On the right, there is a section for "Already Registered?" with fields for Username and Password, a "Log in" button, and a link for "Forgot your password?".

Below the form is a "Security Image" section with a 5x5 grid of numbers: 1, 3, 3, 1, 7. Below the grid is a text input field containing "13317".

At the bottom left, there is a checkbox labeled "3" with the text "I agree with the [acceptable use policy \(AUP\)](#) and [privacy policy](#)." At the bottom right, there is a "Create Account" button labeled "4".

After these settings have been done, it will send an email to your mailbox to activate this account.

5. Please login your email box, and open the active link you get by email, then it will go to the activate page to get this account active.

You will get all the details of your DDNS, such as hostname, WAN IP address etc.

Thanks for your support and attention, for further operation details, please check the full version user manual of our IP Cameras!