

2.4G USB Digital Wireless Camera

USER MANUAL



Guides You into a Harmonious World

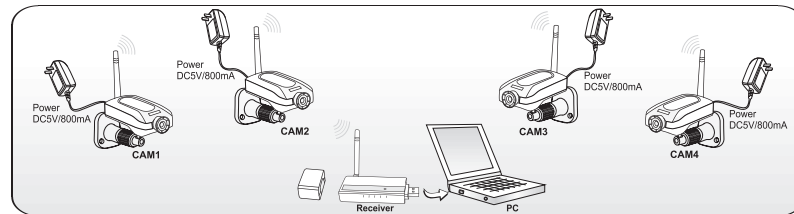


Note


This product is forbidden for illegal use!

I . Introduction:

- 2.4GHz digital wireless security kit, WIFI interference free
- 50m distance indoor, 200m distance outdoor without block
- High resolution live picture
- Support up to 4 cameras at the same time
- Both video and audio monitoring when 1 channel status
- View 1-4 channels livepicture at the same, 4-channel quad picture
- Take photo and save to hard drive, smart search pictures
- Record 1-4 channels to computer hard drive at the same time
- Motion detection recording and audio alert
- Motion detection with Email alert
- Smart search videos and play back
- Network function support view from in Lan and internet
- Support Windows 2000 / XP / VISTA / WIN7




II. Installation Software

1. Install " setup.exe " 
2. Plug in the USB receiver
3. Run program file

System configuration:

	Basic	Recommend
CPU	Pentium4 2.0 GHz	Pentium4 3.0 GHz or more
RAM	512 MB	1 GB or more
Resolution	800 x 600	1024 x 768
System	Windows 2000	Windows XP or Vista
Windows Media Player	Windows Media Player 9	Windows Media Player 9 or higher

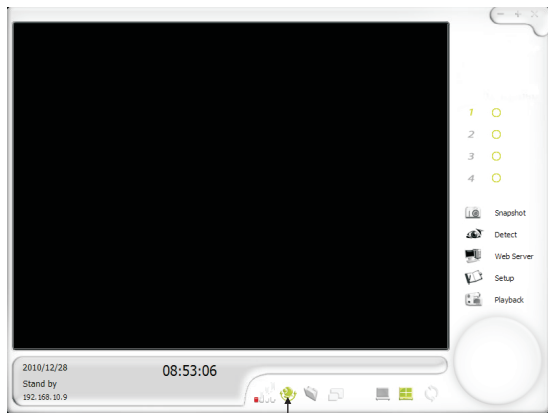
III. Software introduction



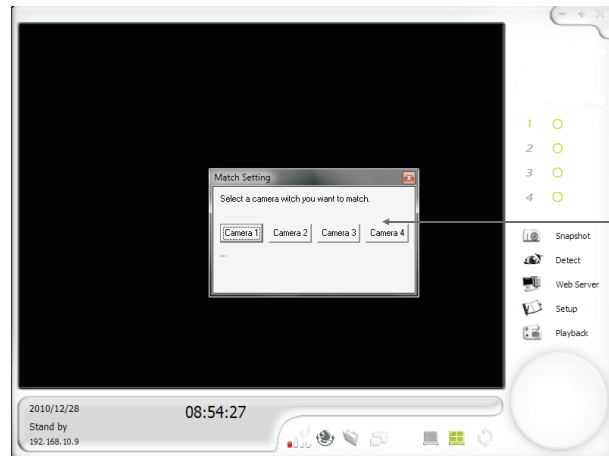
The screenshot displays a software interface for a 2.4G Digital Wireless Kit. It features a quad-view of four camera feeds: top-left shows a family with a laptop; top-right shows a person in a red and white striped shirt in a living room; bottom-left shows a meeting around a table; bottom-right shows a brick building. To the right is a control panel with icons for Snapshot, Detect, Web Server, Setup, and Playback. A status bar at the bottom shows the date (2010/06/15), time (17:10:03), and IP address (192.168.1.9). Various icons in the status bar are labeled with their functions.

- Press this circle to search channel on the full window (points to channel selection buttons 1-4)
- take photo (points to Snapshot icon)
- recording (points to Detect icon)
- internet (points to Web Server icon)
- system setting (points to Setup icon)
- playback the recording file (points to Playback icon)
- no use (points to a blank circle icon)
- quad, show 4 channels at the same time (points to the quad-view)
- full window show one channel (points to a larger circle icon)
- adjust size of picture (points to a zoom icon)
- status, stand by/detecting/taking photo (points to a status icon)
- folder of taking photo (points to a folder icon)
- Signal match camera (points to a signal icon)
- time (points to the time display)
- Date (points to the date display)
- IP Address (points to the IP address display)

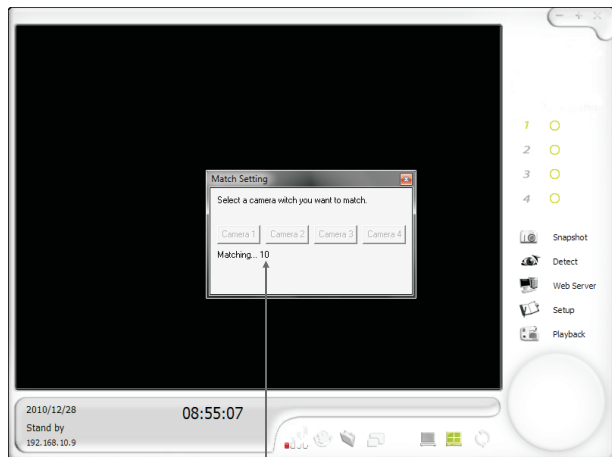
How to connect the camera to USB receiver?



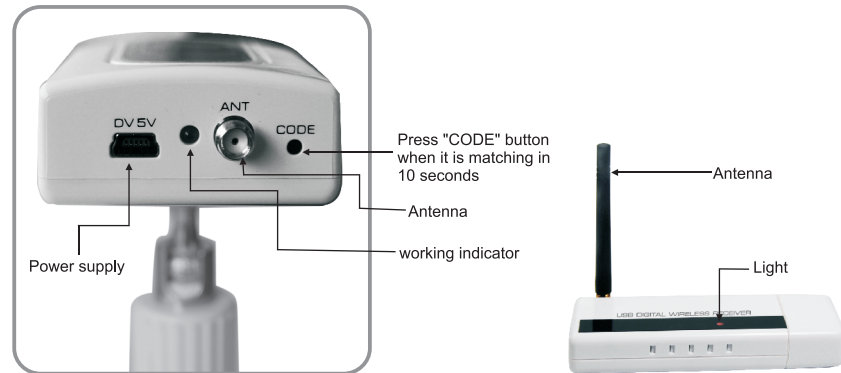
Match camera button



Show 4 channels to match, select the channel



There are 10 seconds for matching, press "CODE" button at the back of camera immediately



System Settings

System (selected) | Setting

Language Support
Language: English

Storage Location
Record: C:\Program Files\WirelessCamera ... Default
Free disk space 0.11005.96(MB), Total Space 0.28654.97(MB)
Snapshot: C:\Program Files\WirelessCamera ... Default
Free disk space 0.11005.96(MB), Total Space 0.28654.97(MB)

Mail Server
SMTP: []
E-mail: []
Account: []
Password: [] [Test]

Startup Options
 Start Detecting
 Start Web Server

Recurring Recording
 Enable [10] Recurring Ratio (%)

Web Service
IP Address: 192.168.1.9
Web Server
Port: 7788
Account: user
Password: []

MMS Server
Port: 8080
Channel: Disable
Web Address: Enable (13)
MMS Address: (none)
Web Address: (http://192.168.1.9:7788/download.htm)

Confirm Apply Cancel

Annotations:

- system basic setting
- only english
- set mail server for mail alarm send you email once there is a motion detection
- start these functions when start
- adjust the free space ratio, rewrite when the free space is lower than setting
- setting recording storage location
- setting taking photo storage location
- show your computer IP address auto
- open this default port 7788 in your router, then when you visit this port of router from internet, you can see the picture
- you can set password to protect your information
- MMS port
- default is disable, but is it optional, when it is enable, you can type the MMS address to see the picture

Camera Settings

System | Setting (selected) | Basic Settings | Image Adjust | Recording | Motion Detect | Alert Settings

Channel Name: [] Note: []

Text Display

Channel Information Date and Time
 Channel Number Date
 Channel Name Time
 Week

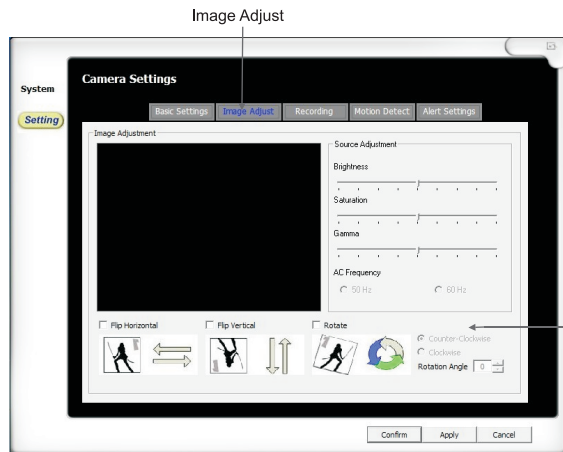
Font Size: Medium
 Text Color: [Red]
 Background: [Black] Transparent

Watermark
 Path: []
 Transparency: []
 Preview: Transparent Opaque

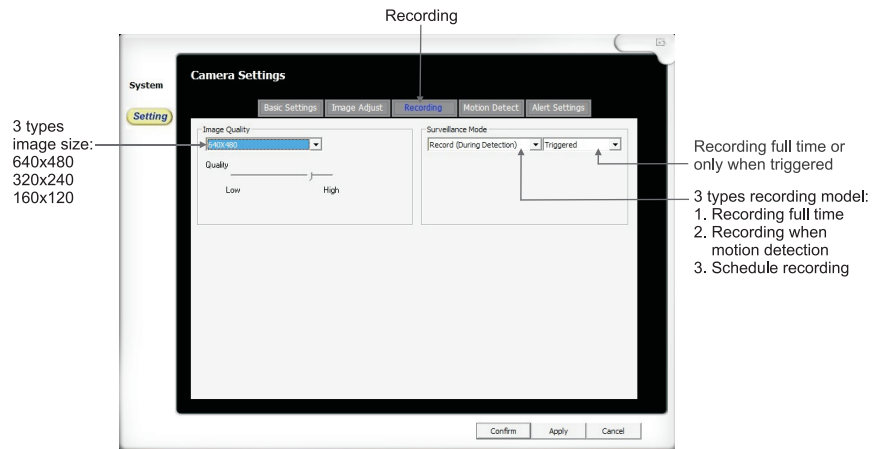
Confirm Apply Cancel

Annotations:

- select setting Camera Setting
- Show the words on the picture
- Show water mark on the picture



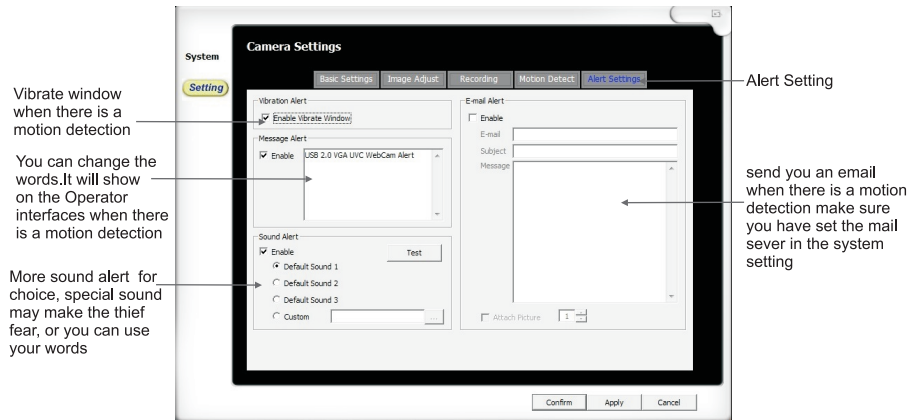
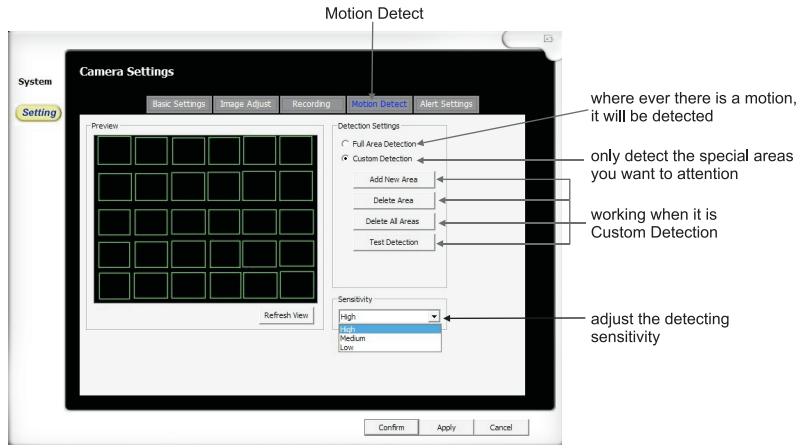
If the camera is not installed for good direction, adjust the picture easily by this way, no need to go to adjust the cameras



3 types image size:
640x480
320x240
160x120

Recording full time or only when triggered

3 types recording model:
1. Recording full time
2. Recording when motion detection
3. Schedule recording



Install the software before plug in the USB receiver

How to match the camera to the receiver?

Press the "code" button when the light is flashing, choose the camera channel you want on the software operator window

IV. FAQ:

Q: Can not find the device after installed software.

A: After you installed the software, when you plug in the USB receiver, it shows found unknown new device, please update the driver from device manager or you can do according the guider.

Q: How to set network function?

A: Setting network, when you press web server, you can see IP address, and port 7788, please also open this port in your router, then when you visit your router IP address:7788, you can see the pictures, e.g.: if your router IP address is 202.96.134.33, then you should visit <http://202.96.134.33:7788>

Q: Why can not we use some functions or buttons?

A: Some functions only work when it is one-channel view, and you should be out "detecting" .

Q: Why can not we go to set and playback?

A: Please leave "detecting".

Q: Why can not remote view?

A: Click "web server" on the face, then the internet function will work, check the port "7788" is open in router, and install the JAVA software when you visit the IP address.

Q: Does it support DDNS?

A: Yes, it supports DDNS, and you can also visit by the ip address or DNS address.

Q: Why does it not recording after press "detecting"?

A: Please check the recording setting, if it is recording all the time, it should work, but if this recording by motion detection, it will only work when there is a motion.

Q: Why can not see remote view?

A: Please check the network setting and IP address.

Q: What is the meaning of "Can not connect to following channel(s)"?

A: Please check the connection status.

Q: What is the meaning of "Can not import to the following channel"?

A: Please check the IP address, maybe your IP address is the same as some other computer.

2.4G Digital Wireless Kit

Q: What is the meaning of "No buffer space error"?

A: The space of hard drive is not enough.

Q: What is the meaning of "Virtual RAM insufficient"?

A: Please update your RAM to be 1G.

V. Accessories:

Receiver: 1PC

Camera: 4PCS (Optional)

Stand of the camera: 4PCS (Optional)

Antenna: 5PCS

Power adapter of the Camera: 4PCS (5V/800mA)

Driver CD: 1PC

User Manual: 1PC



Warranty card

This card is the important evidence to receive our service, please keep it well.

- ① When used normally, the following services can be offered:
 - A. Replacement for functional disorder within 3 months.
 - B. Repair free of charge for functional disorder within 1 year.
 - C. Service for all the life(only charge material cost and freight if the warranty date expires.)
- ② The following conditions are excluded for warranty service (repairable if needed, but will charge material cost and freight.)
 - A. Malfunctions or damages by mistaken installation or using the products exceeding the limited operating conditions.
 - B. Malfunctions or damages by self disassembled or repair and any other misuse.
 - C. Spare parts missed, artificial damages
 - D. Unmatched products.
- ③ Repair cycle Excluding the shipping dates, the Quality Department will submit the examine report in one day on receipt of the products, the products on the quantity under 50sets will be repaired in 3 days after customers signed back the test report.

Product name: _____ **Purchase date:** _____

User's name: _____ **Invoice No.:** _____

User's address: _____ **Distributor:** _____

Tel: _____ **Contact person:** _____

Zip code: _____ **Tel:** _____

Dealer:(Valid by sealed)